

# CORTEX<sup>®</sup>



**COLORMAX<sup>®</sup>**  
24/7 FULL COLOR

**PANORAMIC**  
4K IP CAMERA

OPEN FORMAT - NDAA COMPLIANT - VMS AI



**4K RECORDERS**  
AI & EXTENDED STORAGE

8 CHANNELS  
16 CHANNELS  
32 CHANNELS  
64 CHANNELS  
128 CHANNELS  
256 CHANNELS



[CORTEXCCTV.COM](http://CORTEXCCTV.COM)

**SURVEILLANCE &  
ACCESS CONTROL**



# ABOUT CORTEX®

## SUCCESS THROUGH THE YEARS

We are delighted to welcome you to the Cortex catalog, the ultimate source for top-tier security solutions. We are proud to provide a wide range of cutting-edge surveillance products that are tailored to the unique requirements of both enterprises and individuals. Our selection guarantees unparalleled security and peace of mind, from state-of-the-art surveillance systems and access control to indispensable accessories. Each item is meticulously selected to ensure that it is reliable, durable, and equipped with the latest technology. With our extensive mature product range and up front pricing with no games or gimmicks, Cortex accommodates clients' requirements regardless of their financial constraints. Our brand is a promise and our commitment to you.

In a field that is continually evolving, our passion for security technology and R & D is clearly evident. Cortex security products offer a variety of unique features that provide optimal value while maximizing our clients ability to turn quotes into invoices. The result has allowed Cortex to propel its customers to a higher level of competitiveness and proven profitability.

Partner with us to improve security infrastructures and enjoy competitive pricing while receiving unparalleled customer service. Our security solutions are expertly crafted to ensure future proof adaptability and high performance interfaces. To become a partner please visit [www.cortexcctv.com](http://www.cortexcctv.com). We are eager to collaborate with you on your most challenging projects!

Cortex Security assumes no responsibilities for any typographical error, omission or other erroneous data construed herein. Some images may be used for illustration purposes only, not representing actual products. All the rights for the registered trademarks are reserved for their respectable owners

# TABLE OF CONTENTS



## IP PRODUCTS

IP Network Video Recorders	4
Mobile App & IP Network Video Management	7
IP PoE Cameras	10
IP PoE PTZ Cameras	24

## ANALOG HD PRODUCTS

Hybrid 5 in 1 HD BNC Recorders	28
Hybrid DVR Comparison Chart	32
Hybrid 4 in 1 High Res BNC Cameras	34

## ACCESSORIES

Camera Brackets and Back Boxes	38
PoE Switches	40
Power Supplies	40
Connectors and Tools	42
Bulk Wire and Cable	44
Miscellaneous Accessories	46

## ACCESS CONTROL PRODUCTS

Door Controllers and Proximity Readers	53
Electromagnetic Locks and Request to Exit	56
Access Control Accessories	58





**One Medallion Platform**  
**Full Software Suite**  
**Remote Video Monitoring & Management**  
**Cloud Back-up**  
**P2P Quick Setup**  
**Expanded smartphone app functions**  
**UL Rated Models**

NVRs From 8 to 256 Channels  
 Models with or without PoE (see chart)



Advanced Storage Management  
 PTZ Controls & PTZ Link Functions  
 Event & AI Based Playback  
 AI Threat detection and notification  
 Advanced Search Options  
 Commercial Grade  
 H.265 High Efficiency Compression  
 Up to 12MP UHD - Ultra High Definition  
 Remote Image Controls  
 NDAA Compliant  
 FCC Approved



# MEDALLION IP SERIES

COMPLETE IP LINE

## 8 CH LITE NVR WITH 8 POE COR-IPN8-P8LT

- FEATURES**
- 8 Channels with 8 on-board POE
  - H.264/H.264+ H.265/H.265+ Compression
  - Compact size
  - 76 Mbps bandwidth
  - 4K HDMI output
  - 1 HDD bay up to 14TB
  - Supports Analytics (w analytic camera)
  - 1 x USB 3.0 and 1 x USB 2.0
  - Dimensions: 11.6 x 8.93 x 2 inches
  - UL Power supply
  - NDAA Compliant



## 8 CH PREMIUM NVR WITH 8 POE COR-IPN8-P8

- FEATURES**
- 8 Channels with 8 on-board POE
  - H.264/H.264+ H.265/H.265+ Compression
  - Compact size
  - 128 Mbps bandwidth
  - 4K HDMI output
  - 1 HDD bay up to 14TB
  - E-SATA expandable
  - Supports Analytics (w analytic camera)
  - 1 x USB 3.0 and 2 x USB 2.0
  - Dimensions: 11.6 x 8.93 x 2 inches
  - UL Power supply
  - NDAA Compliant



## 16 CH NVR WITH 16 POE COR-IPN16-P16

- FEATURES**
- 16 Channels with 16 on-board POE
  - H.264/H.264+ H.265/H.265+ Compression
  - Semi compact size
  - 112 Mbps bandwidth
  - 4K HDMI output
  - 2 HDD bays up to 14TB each
  - Supports Analytics (w analytic camera)
  - 1 x USB 3.0 and 1 x USB 2.0
  - Dimensions: 11.6 x 13.3 x 2 inches
  - UL Power supply
  - NDAA Compliant



## 16 CH NVR WITH 16 POE COR-IPN16-P16H4

- FEATURES**
- 16 Channels with 16 on-board POE
  - H.264/H.264+ H.265/H.265+ Compression
  - 256 Mbps bandwidth
  - 4K HDMI output
  - 4 HDD bays up to 18TB each
  - E-SATA expandable
  - Supports Analytics (w analytic camera)
  - 1 x USB 3.0 and 1 x USB 2.0
  - Dimensions: 14.8 x 12.7 x 2.5 inches
  - UL Power supply
  - NDAA Compliant



### 32 CH NVR WITH 16 POE

COR-IPN32-P16H4

#### FEATURES

- 32 Channels with 16 on-board POE
- H.264/H.264+ H.265/H.265+ Compression
- 256 Mbps bandwidth
- 4K HDMI output
- 4 HDD bays up to 18TB each
- E-SATA expandable
- Supports Analytics (w analytic camera)
- 1 x USB 3.0 and 1 x USB 2.0
- Dimensions 14.8 x 12.7 x 2.5 inches
- UL Power supply
- NDAA Compliant



### 64 CH NVR

COR-IP64-H8E

#### FEATURES

- 64 Channels
- H.264/H.264+ H.265/H.265+ Compression
- 640 Mbps bandwidth
- 4K HDMI output
- 4 HDD bays up to 18TB each
- RAID 0, 1, 5 6 & 10
- E-SATA expandable
- Supports Analytics (w analytic camera)
- 1 x USB 3.0 and 1 x USB 2.0
- Dimensions 18.11 x 12.7 x 3.5 inches
- UL Power supply
- NDAA Compliant



### 64 CH ENTERPRISE NVR

COR-IPN64-H16

#### FEATURES

- 64 Channels
- H.264/H.264+ H.265/H.265+ Compression
- 768 Mbps bandwidth
- 4K HDMI output x 3 / 1 HDMI at 2K
- 16 HDD bays up to 18TB each
- RAID 0, 1, 5 6 & 10
- E-SATA expandable
- Supports Analytics (w analytic camera)
- 2 x USB 3.0 and 1 x USB 2.0
- Dimensions 17.28x 18.35 x 6.2 inches
- UL Power supply
- NDAA Compliant



### 256 CH ENTERPRISE NVR

COR-IPN256-H16

#### FEATURES

- 256 Channels
- H.264/H.264+ H.265/H.265+ Compression
- 1024 Mbps bandwidth
- 4K HDMI output x 3 / 1 HDMI at 2K
- 16 HDD bays up to 18TB each
- RAID 0, 1, 5, 6 & 10
- E-SATA expandable
- Supports Analytics (w analytic camera)
- 2 x USB 3.0 and 1 x USB 2.0
- Dimensions 17.28x 18.35 x 6.2 inches
- UL Power supply
- NDAA Compliant



## MEDALLION SERIES MOBILE APP

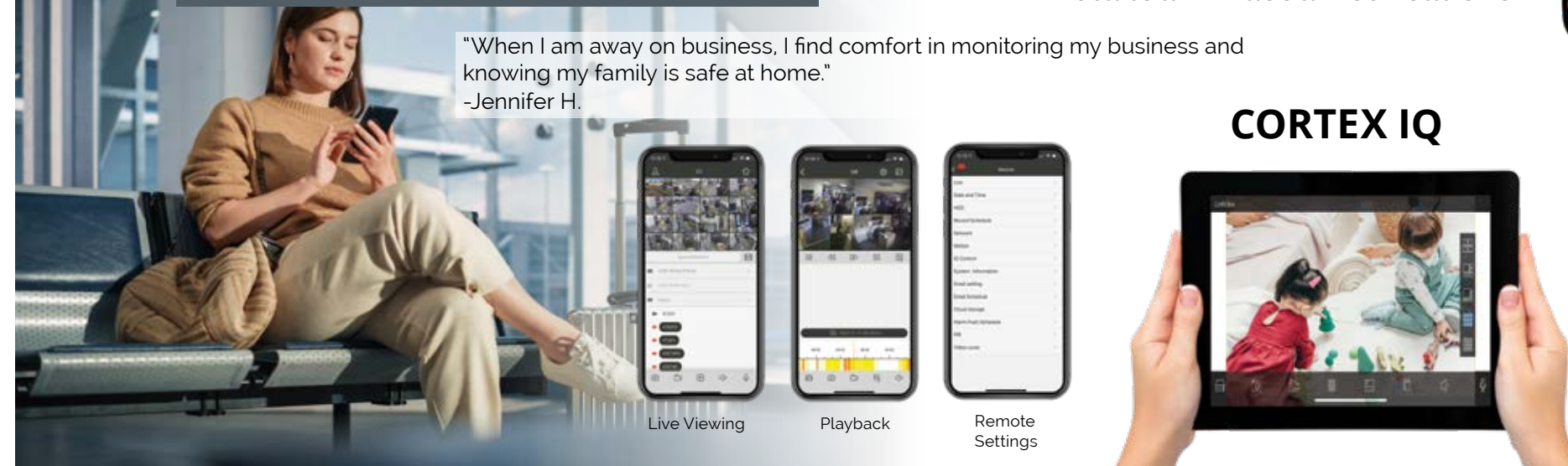
MOBILE VIEWING AT YOUR FINGERTIPS

Detailed AI Based Notifications



CORTEX IQ

"When I am away on business, I find comfort in monitoring my business and knowing my family is safe at home."  
-Jennifer H.



### CORTEX IQ

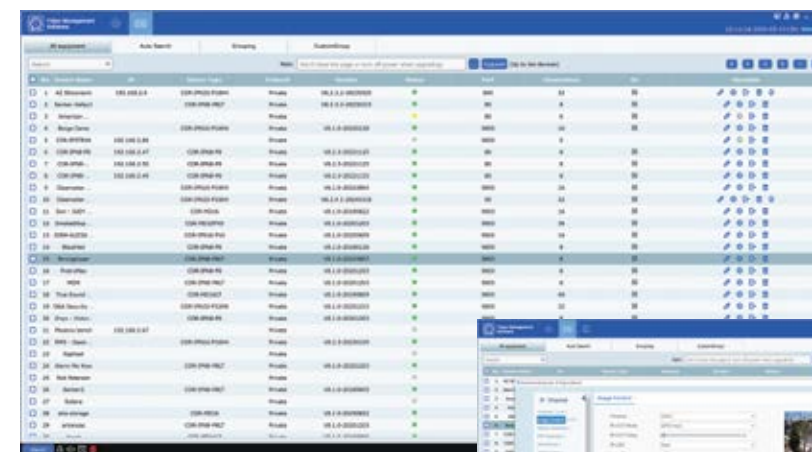


Download iOS



Download Android

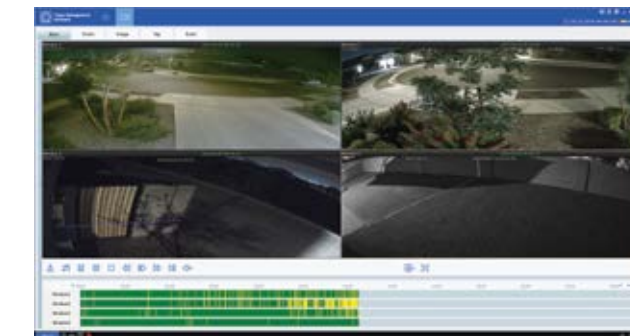
## MEDALLION VMS PC/MAC SOFTWARE











- Full Software Suite
- Multi device management
- Remote image controls
- View multiple sites at the same time
- Back-up to PC



Live View and Playback





	COR-IPN8-P8LT	COR-IPN8-P8	COR-IPN16-P16	COR-IPN16-P16H4
				
				
<b>Features</b>				
Video Input	8CH IP	8CH IP	16CH IP	16CH IP
Video Output	1 - HDMI up to 4K (3840 x 2160) 1 - VGA up to 1080P	1 - HDMI up to 4K (3840 x 2160) 1 - VGA up to 1080P	1 - HDMI up to 4K (3840 x 2160) 1 - VGA up to 1080P	2 - HDMI up to 4K (3840 x 2160) 1 - VGA up to 1080P
Bandwidth	76Mbps	128Mbps	112Mbps	256Mbps
Max Recording Resolution	up to 12MP	up to 12MP	up to 12MP	up to 12MP
Decoding Format	H.265 / H.265+ H.264 / H.264+	H.265 / H.265+ H.264 / H.264+	H.265 / H.265+ H.264 / H.264+	H.265 / H.265+ H.264 / H.264+
Audio In / Out	RCA Audio output and HDMI output	RCA Audio output and HDMI output	RCA Audio output and HDMI output	RCA Audio output and HDMI output
Alarm In / Out	0 Alarm in / 0 Alarm Out	4 Alarm In / 1 Alarm Out	4 Alarm In / 1 Alarm Out	16 Alarm In / 1 Alarm Out
Built-in PoE	8	8	16	16
Analytic Support	Yes (with analytic cameras)	Yes (with analytic cameras)	Yes (with analytic cameras)	Yes (with analytic cameras)
Storage	1 HDD Bay up to 14TB	1 HDD Bay up to 14TB 1- E-SATA expansion slot	2 HDD Bays up to 14TB each	4 HDD Bays up to 18TB each 1- E-SATA expansion slot
Panoramic De-Warping	On App or VMS	On App or VMS	On App or VMS	On App or VMS
USB Ports	1 x 3.0 USB for backup / upgrade 2 x 2.0 USB for mouse	1 x 3.0 USB for backup / upgrade 2 x 2.0 USB for mouse	1 x 3.0 USB for backup / upgrade 2 x 2.0 USB for mouse	1 x 3.0 USB for backup / upgrade 2 x 2.0 USB for mouse
Dimensions	300 x 227 x 53mm (11.6 x 8.93 x 2 inches)	300 x 227 x 53mm (11.6 x 8.93 x 2 inches)	300 x 340 x 50mm (11.6 x 13.3 x 2 inches)	379 x 326 x 66mm (14.8 x 12.7 x 2.5 inches)

	COR-IPN32-P16H4	COR-IPN64H8E	COR-IPN64H16	COR-IPN256
				
				
<b>Features</b>				
Video Input	32CH IP	64CH IP	64CH IP	256CH IP
Video Output	2 - HDMI up to 4K (3840 x 2160) 1 - VGA up to 1080P	1 - HDMI up to 4K (3840 x 2160) 1 - VGA up to 1080P	3 - HDMI up to 4K (3840 x 2160) 1 - HDMI up to 2K (2560 x 1440)	3 - HDMI up to 4K (3840 x 2160) 1 - HDMI up to 2K (2560 x 1440)
Bandwidth	256Mbps	640Mbps	768Mbps	1024Mbps
Max Recording Resolution	up to 12MP	up to 12MP	up to 12MP	up to 12MP
Decoding Format	H.265 / H.265+ H.264 / H.264+	H.265 / H.265+ H.264 / H.264+	H.265 / H.265+ H.264 / H.264+	H.265 / H.265+ H.264 / H.264+
Audio In / Out	RCA Audio output and HDMI output	RCA Audio output and HDMI output	RCA Audio output and HDMI output	RCA Audio output and HDMI output
Alarm In / Out	16 Alarm In / 1 Alarm Out	16 Alarm In / 4 Alarm Out	16 Alarm In / 4 Alarm Out	16 Alarm In / 4 Alarm Out
Built-in PoE	16	0	0	0
Analytic Support	Yes (with analytic cameras)	Yes (with analytic cameras)	Yes (with analytic cameras)	Yes (with analytic cameras)
Storage	4 HDD Bays up to 18TB each 1- E-SATA expansion slot	8 HDD Bays up to 18TB each 1- E-SATA expansion slot	16 HDD Bays up to 18TB each 1 - E-SATA expansion slot	16 HDD Bays up to 18TB each 1 - E-SATA expansion slot
Panoramic De-Warping	On board, On App or VMS	On board, On App or VMS	On board, On App or VMS	On board, On App or VMS
USB Ports	1 x 3.0 USB for backup / upgrade 2 x 2.0 USB for mouse	1 x 3.0 USB for backup / upgrade 2 x 2.0 USB for mouse	2 - 3.0 USB for backup / upgrade 1 - 2.0 USB for mouse	2 - 3.0 USB for backup / upgrade 1 - 2.0 USB for mouse
Dimensions	379 x 326 x 66mm (14.8 x 12.7 x 2.5 inches)	460 x 440 x 89mm (18.11 x 17.32 x 3.5 inches)	439 x 466x 157mm (17.28 x 18.35 x 6.2 inches)	439 x 466x 157mm (17.28 x 18.35 x 6.2 inches)

# ESSENTIAL SERIES

E-Series

Great Economic Value

2, 4, 5 & 8MP fixed wide angle

5MP Varifocal

Essential AI on 5MP & 8MP



## 2MP IP FIXED BULLET

COR-IP2BM/COR-IP2TRM

**FEATURES**

- 3.6mm wide angle fixed lens
- Built-in microphone
- 60ft IR range
- IP67 metal housing
- PoE or 12vDC
- Dimensions: 6.2 x 3.5 x 3.5 inch (IP2BM)
- Dimensions: 3.9 x 3.9 x 3.5 inches



## 2MP IP FIXED TURRET

COR-IP2TRFE

**FEATURES**

- 3.6mm wide angle fixed lens
- Built-in microphone
- 80ft IR range
- IP67 metal housing
- PoE or 12vDC
- Dimensions: 3.9 x 3.9 x 3.5 inches



## 4MP IP FIXED TURRET

COR-IP4TRFE

**FEATURES**

- 3.6mm fixed lens
- Small size
- ColorMAX 24/7 Color
- 80ft IR range
- IP67 metal housing
- PoE or 12vDC
- Dimensions: 6.2 x 3.5 x 3.5 inches



## 5MP IP SMALL TURRET

COR-IP5TRFE / IP5TRFEG

**FEATURES**

- 2.8mm wide angle fixed lens
- Built-in microphone
- Essential AI
- Dual lighting ColorMAX 24/7 color
- IP67 metal housing
- PoE or 12vDC
- Dimensions: 3.9 x 3.9 x 3.5 inches



\*also available in bullet form (COR-IP5BFE)

## 5MP IP MINI DOME

COR-IP5PE

**FEATURES**

- 2.8mm wide angle fixed lens
- Built-in microphone
- Essential AI
- 30ft IR range
- Compact Design
- PoE or 12vDC
- Dimensions: 5.3 x 5.3 x 4.7 inches



## 5MP IP VANDAL DOME

COR-IP5DFE

**FEATURES**

- 2.8mm fixed lens
- Built-in microphone
- Essential AI
- 65ft IR range
- IP67 metal housing
- PoE or 12vDC
- Dimensions: 4.5 x 3.6 x 3.6 inches



## 5MP IP MOTORIZED TURRET

COR-IP5TRVE

**FEATURES**

- 2.8-12mm lens
- Motorized varifocal
- Essential AI
- 150ft IR range
- IP67 metal housing
- PoE or 12vDC
- Dimensions: 5.3 x 5 x 5 inches



## 5MP IP VANDAL DOME

COR-IP5DV

**FEATURES**

- 2.8-12mm lens
- Motorized varifocal
- Essential AI
- 80ft IR range
- IP67 metal housing
- PoE or 12vDC
- Dimensions: 5.3 x 5 x 5 inches



## 5MP IP SMALL TURRET

COR-IP8TRFE

**FEATURES**

- 2.8mm wide angle fixed lens
- Built-in microphone
- Essential AI
- Dual lighting ColorMAX 24/7 color
- IP67 metal housing
- PoE or 12vDC
- Dimensions: 3.9 x 3.9 x 3.5 inches

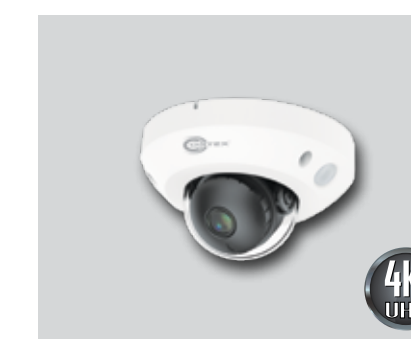


## 8MP IP MINI DOME

COR-IP8PE

**FEATURES**

- 2.8mm wide angle fixed lens
- Built-in microphone
- Essential AI
- 30ft IR range
- Compact Design
- PoE or 12vDC
- Dimensions: 4.6 x 4.6 x 2.5 inches





# PREMIUM COLOMAX

Dual Lighting: Infrared + Warm White Light  
 24/7 Full Color  
 4, 5 & 8MP Fixed wide angle  
 5 & 8MP MP Varifocal  
 All Models with Advanced AI

**COLORMAX**  
 FULL COLOR 24/7

**NDAA COMPLIANT** **FCC APPROVED**



## CORTEX

### 5MP IP COLOMAX TURRET

**COR-IP5TRF / IP5TRFG**

FEATURES

- 2.8mm wide angle fixed lens
- Small size
- Advanced AI
- Dual lighting ColorMAX 24/7 color
- IP67 metal housing
- PoE or 12vDC
- Dimensions: 3.9 x 3.9 x 3.5 inches




### 5MP IP COLOMAX BULLET

**COR-IP5BF**

FEATURES

- 2.8mm wide angle fixed lens
- Advanced AI
- Dual lighting ColorMAX 24/7 color
- IP67 metal housing
- PoE or 12vDC
- Dimensions: 5.3 x 5.3 x 4.7 inches



### 5MP IP COLOMAX DOME

**COR-IP5DF**

FEATURES

- 2.8mm wide angle fixed lens
- Advanced AI
- Dual lighting ColorMAX 24/7 color
- IP66 metal housing
- Built-in Microphone & Speaker (2 way)
- PoE or 12vDC
- Dimensions: 5.3 x 5 x 5 inches



### 5MP IP COLOMAX TURRET

**COR-IP5TRVA / IP5TRVAG**

FEATURES

- 2.8-12mm lens
- Motorized varifocal
- Advanced AI
- Dual lighting ColorMAX 24/7 color
- IP66 metal housing
- PoE or 12vDC
- Dimensions: 5.3 x 5 x 5 inches




### 8MP IP COLOMAX TURRET

**COR-IP8TRF**

FEATURES

- 2.8mm wide angle fixed lens
- Small size
- Advanced AI
- Dual lighting ColorMAX 24/7 color
- IP67 metal housing
- PoE or 12vDC
- Dimensions: 3.9 x 3.9 x 3.5 inches




### 8MP IP COLOMAX TURRET

**COR-IP8TRFG**

FEATURES

- 2.8mm wide angle fixed lens
- Small size
- Advanced AI
- Dual lighting ColorMAX 24/7 color
- IP67 metal housing
- PoE or 12vDC
- Dimensions: 3.9 x 3.9 x 3.5 inches




### 8MP IP COLOMAX BULLET

**COR-IP8BF**

FEATURES

- 2.8mm wide angle fixed lens
- Advanced AI
- Dual lighting ColorMAX 24/7 color
- IP67 metal housing
- PoE or 12vDC
- Dimensions: 5.3 x 5.3 x 4.7 inches



### 8MP IP COLOMAX BULLET

**COR-IP8BVA / COR-IP8BVAG**

FEATURES

- 2.8-12mm lens
- Motorized varifocal
- Advanced AI
- Dual lighting ColorMAX 24/7 color
- IP66 metal housing
- PoE or 12vDC
- Dimensions: 9.5 x 3.4 x 3.3 inches




### 8MP IP COLOMAX TURRET

**COR-IP8TRVA**

FEATURES

- 2.8-12mm lens
- Motorized varifocal
- Advanced AI
- Dual lighting ColorMAX 24/7 color
- IP66 metal housing
- PoE or 12vDC
- Dimensions: 5.3 x 5 x 5 inches








### 8MP IP COLOMAX TURRET

**COR-IP8TRVAG**

FEATURES

- 2.8-12mm lens
- Motorized varifocal
- Advanced AI
- Dual lighting ColorMAX 24/7 color
- IP66 metal housing
- PoE or 12vDC
- Dimensions: 5.3 x 5 x 5 inches



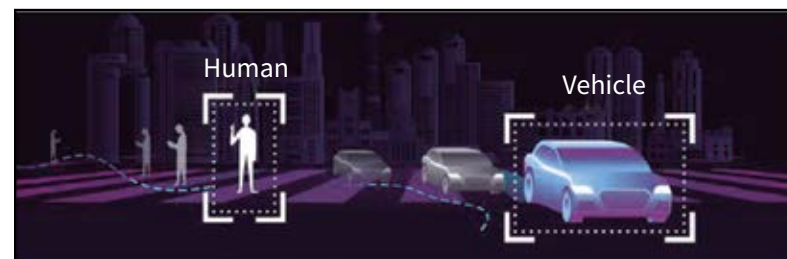
	COR-IP2TRFE	COR-IP4TRFE	COR-IP5TRFE	COR-IP5TRF	COR-IP4TRFU	COR-IP8TRFE
						
<b>KEY FEATURES</b>	ESSENTIAL	24/7 FULL COLOR	COLORMAX 24/7 FULL COLOR + ESSENTIAL AI	COLORMAX 24/7 FULL COLOR + FULL AI	COLORMAX 24/7 ULTRA FULL COLOR + FULL AI	COLORMAX 24/7 FULL COLOR + ESSENTIAL AI
Megapixel	2 Megapixel (1920 x 1080)	4 Megapixel (2688 x 1520)	5 Megapixel (2880 x 1620)	5 Megapixel (2880 x 1620)	4 Megapixel (2688 x 1520)	8 Megapixel (3840x 2160)
Illumination	Infrared	Dual Lighting: Warm White Light and IR	Dual Lighting: Warm White Light and IR	Dual Lighting: Warm White Light and IR	Warm White Light and Strobe	Dual Lighting: Warm White Light and IR
Active Deterrence	No	White Strobe	Programmable White Light	Programmable White Light	Dedicated White and Amber Strobe	Programmable White Light
Image Sensor	1/2.7" Progressive CMOS	1/3" Progressive CMOS	1/2.7" Progressive CMOS	1/2.7" Progressive CMOS	1/1.8" Progressive CMOS	1/2.7" Progressive CMOS
Lux Level	0.06 Lux	0.004 Lux	0.004 Lux	0.002 Lux	0.0005 Lux	0.009 Lux
Aperture/ F-Stop	F2.2	F1.6	F1.6	F1.2	F1.0	F1.6
Lens	Wide Angle	Wide Angle	Wide Angle	Wide Angle	Wide Angle	Wide Angle
Field of View	Horizontal: 86° Vertical: 47° Diagonal: 105°	Horizontal: 96° Vertical: 52° Diagonal: 113°	Horizontal:110° Vertical: 58° Diagonal: 133°	Horizontal:110° Vertical: 58° Diagonal: 132°	Horizontal: 96° Vertical: 51° Diagonal: 115°	Horizontal: 110° Vertical: 58° Diagonal: 132
WDR	Digital WDR	Digital WDR	True WDR	True WDR	True WDR	Digital WDR
AI	No	No	Essential AI	Full AI with Recognition	Full AI with Recognition	Essential AI
Audio	Built-in Microphone	Built-in Microphone	Built-in Microphone	Built-in Microphone	Built-in Microphone and Speaker (2 way)	Built-in Microphone
Storage	Micro SD up to 256GB	Micro SD up to 256GB	Micro SD up to 256GB	Micro SD up to 256GB	Micro SD up to 256GB	Micro SD up to 256GB
Outdoor Rated	All Metal IP67	All Metal IP67	All Metal IP67	All Metal IP67	All Metal IP67	All Metal IP67
Back Box Size	COR-IPBBM	COR-IPBBM	COR-IPBBM	COR-IPBBM	COR-IPBBS	COR-IPBBM

	COR-IP8TRF	COR-IP8TRFU	COR-IP5TRVE	COR-IP5TRVA	COR-IP4TRVU	COR-IP8TRVA	COR-IP8TRVU
							
<b>KEY FEATURES</b>	COLORMAX 24/7 FULL COLOR + FULL AI	COLORMAX ULTRA 24/7 FULL COLOR + FULL AI	ESSENTIAL AI	COLORMAX 24/7 FULL COLOR + FULL AI	COLORMAX 24/7 ULTRA FULL COLOR + FULL AI	COLORMAX 24/7 FULL COLOR + FULL AI	COLORMAX 24/7 ULTRA FULL COLOR + FULL AI
Megapixel	8 Megapixel (3840x 2160)	8 Megapixel (3840x 2160)	5 Megapixel (2880 x 1620)	5 Megapixel (2880 x 1620)	4 Megapixel (2688 x 1520)	8 Megapixel (3840x 2160)	8 Megapixel (3840x 2160)
Illumination	Dual Lighting: Warm White Light and IR	Warm White Light and Strobe	Infrared	Warm White Light and Strobe	Warm White Light and Strobe	Warm White Light and Strobe	Warm White Light and Strobe
Active Deterrence	Programmable White Light	Dedicated White and Amber Strobe	No	Programmable White Light	Dedicated White and Amber Strobe	Programmable White Light	Dedicated White and Amber Strobe
Image Sensor	1/2.8" Progressive CMOS	1/1.8" Progressive CMOS	1/2.7" Progressive CMOS	1/2.7" Progressive CMOS	1/1.8" Progressive CMOS	1/2.8" Progressive CMOS	1/1.8" Progressive CMOS
Lux Level	0.007 Lux	0.0005 Lux	0.004 Lux	0.002 Lux	0.0005 Lux	0.007 Lux	0.0005 Lux
Aperture/ F-Stop	F1.0	F1.0	F1.6	F1.2	F1.0	F1.2	F1.0
Lens	Wide Angle	Wide Angle	2.8-12mm Motorized Varifocal	2.8-12mm Motorized Varifocal	3-10mm Motorized Varifocal	2.8-12mm Motorized Varifocal	3-10mm Motorized Varifocal
Field of View	Horizontal: 105° Vertical: 55° Diagonal: 125°	Horizontal: 96° Vertical: 51° Diagonal: 115°	Horizontal: 34-107°, Vertical: 19-55° Diagonal: 38-134°	Horizontal: 35-113°, Vertical: 20-59° Diagonal: 41-138°	Horizontal: 56-105° Vertical: 32-54° Diagonal: 65-131°	Horizontal: 34-107°, Vertical: 19-56° Diagonal: 39-129°	Horizontal: 56-105° Vertical: 32-54° Diagonal: 65-131°
WDR	True WDR	True WDR	True WDR	True WDR	True WDR	True WDR	True WDR
AI	Full AI with Recognition	Full AI with Recognition	Essential AI	Full AI with Recognition	Full AI with Recognition	Full AI with Recognition	Full AI with Recognition
Audio	Built-in Microphone	Built-in Microphone and Speaker (2 way)	External Audio In/Out	External Audio In/Out	Built-in Microphone and Speaker (2 way)	External Audio In/Out	Built-in Microphone and Speaker (2 way)
Storage	Micro SD up to 256GB	Micro SD up to 256GB	Micro SD up to 256GB	Micro SD up to 256GB	Micro SD up to 256GB	Micro SD up to 256GB	Micro SD up to 256GB
Outdoor Rated	All Metal IP67	All Metal IP67	All Metal IP67	All Metal IP66	All Metal IP67	All Metal IP66	All Metal IP67
Back Box Size	COR-IPBBM	COR-IPBBS	COR-IPBBL	COR-IPBBL	COR-IPBBL	COR-IPBBL	COR-IPBBL



# CORTEX AI TECHNOLOGY

Cortex full AI network cameras come with enhanced deep learning artificial intelligence that supports various intelligent functions for multiple scenarios. With easy configuration, quickly enable video analysis rules for effective performance and reduce false alarms.



## Human & Vehicle Detection

All Cortex AI cameras have built-in Human and Vehicle Detection. Use in conjunction with other AI functions to further eliminate false alarms (example: line crossing with human detection. Only a human crossing the line in a certain direction will set off alarm or notification)

## Facial Recognition

Adopt a deep learning algorithm to extract facial features then recognize the faces accurately after comparing them with the facial snapshots in the software. Use with a White List or a Black List to trigger alarm notifications.



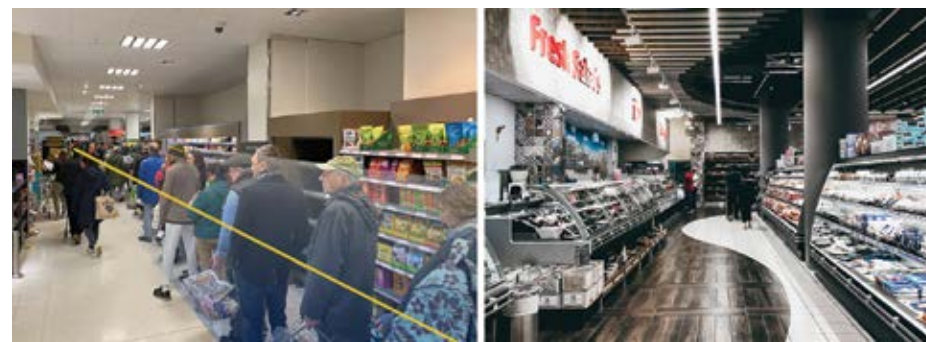
## License Plate Recognition

A deep learning algorithm of OCR (optical character recognition) with ANPR (automatic number-plate recognition) that extracts character data from a license plate to catalog in the database. Use with a White List or a Black List to trigger alarm notifications.



## Queue Length Detection

Queue length detection can detect single-person processing events and real-time alarms when there are too many people in a queue. Improve service efficiency, enhance shopping experiences and handle abnormal situations.



## Customer Flow Statistics

Customer flow cycle analysis will gather repeat visitor statistics, customers flow time period, an accurate analysis of customers age and gender as well as new or old customers to help efficiently sell to the market.



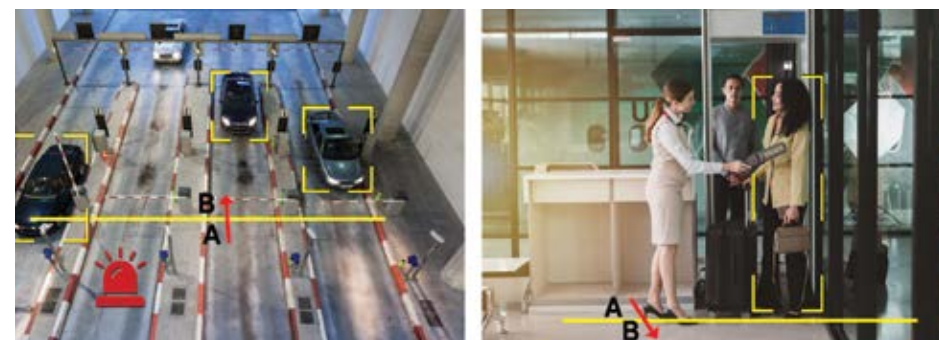
## Stationary Object Detection

Set a specific area within the camera, once something is placed in that area or taken out of that area the camera will trigger an alarm or notification.



## Line Crossing Detection

Create a threshold with a line for smart triggering. Once object crosses threshold in the specific direction programmed it will trigger alarm or notification. Take it a step further by adding human or vehicle detection in conjunction.



## Perimeter Intrusion Detection

Adopt a deep learning algorithm to extract facial features then recognize the faces accurately after comparing them with the facial snapshots in the software.



## Regional Population Statistics

Detect the number of people in a specific area in real time. When people in the area exceeds the limit threshold an alarm or notification can be sent.





# SPECIALTY CAMERAS

- Panoramic pages 18-19
- ColorMAX Ultra Series pages 20-21
- License Plate OCR/ANPR page 22
- Dual Module IP/Thermal Cameras page 23
- Multi Sensor pages 24-25
- Pan Tilt Zoom Cameras pages 26-27



**CORTEX**

## 12MP IP PANORAMIC CAMERA

COR-IP8FISH

360°



Small Size



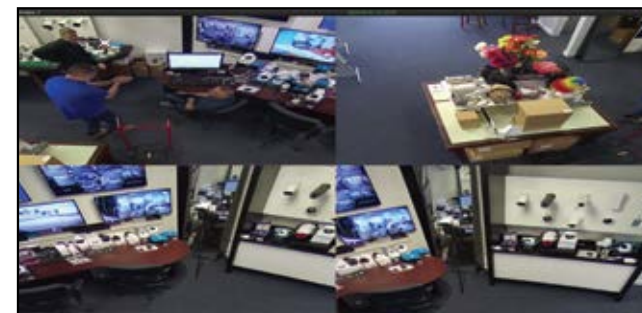
Single lens 360° panoramic camera  
12 Megapixel CMOS sensor  
On board de-warping  
Advanced AI

**FEATURES**

- 1.1mm lens 360° Panoramic Lens
- Advanced AI
- Built-in Microphone and Speaker (2 way)
- F1.2 / 0.01 Lux
- 15ft IR range / 30ft in diameter
- On-board Storage
- Dimensions: 4.72 x 4.72 x 2.16 inches



360° Panoramic View



De-Warped View (VMS)

**360° PANORAMIC**

## 8MP IP PANORAMIC BULLET

COR-IP8BW



**FEATURES**

- 2.0mm lens 180° Panoramic Lens
- Advanced AI
- Dual lighting ColorMAX 24/7 color
- Active Deterrence Lights
- Built-in Siren
- Built-in Microphone & Speaker (2 way)
- OCR/ANPR
- F1.6 / 0.003 Lux
- 80ft IR range
- On-board Storage
- Dimensions: 9.75 x 2.9 x 2.9 inches



180°  
← PANORAMIC →

**180° PANORAMIC**



## 8MP IP PANORAMIC TURRET

COR-IP8TRW



**FEATURES**

- 2.0mm lens 180° Panoramic Lens
- Advanced AI
- Dual lighting ColorMAX 24/7 color
- Active Deterrence Lights
- Built-in Siren
- Built-in Microphone & Speaker (2 way)
- OCR/ANPR
- F1.6 / 0.003 Lux
- 80ft IR range
- On-board Storage
- Dimensions: 4.45 x 4.45 x 3.8 inches



180°  
← PANORAMIC →

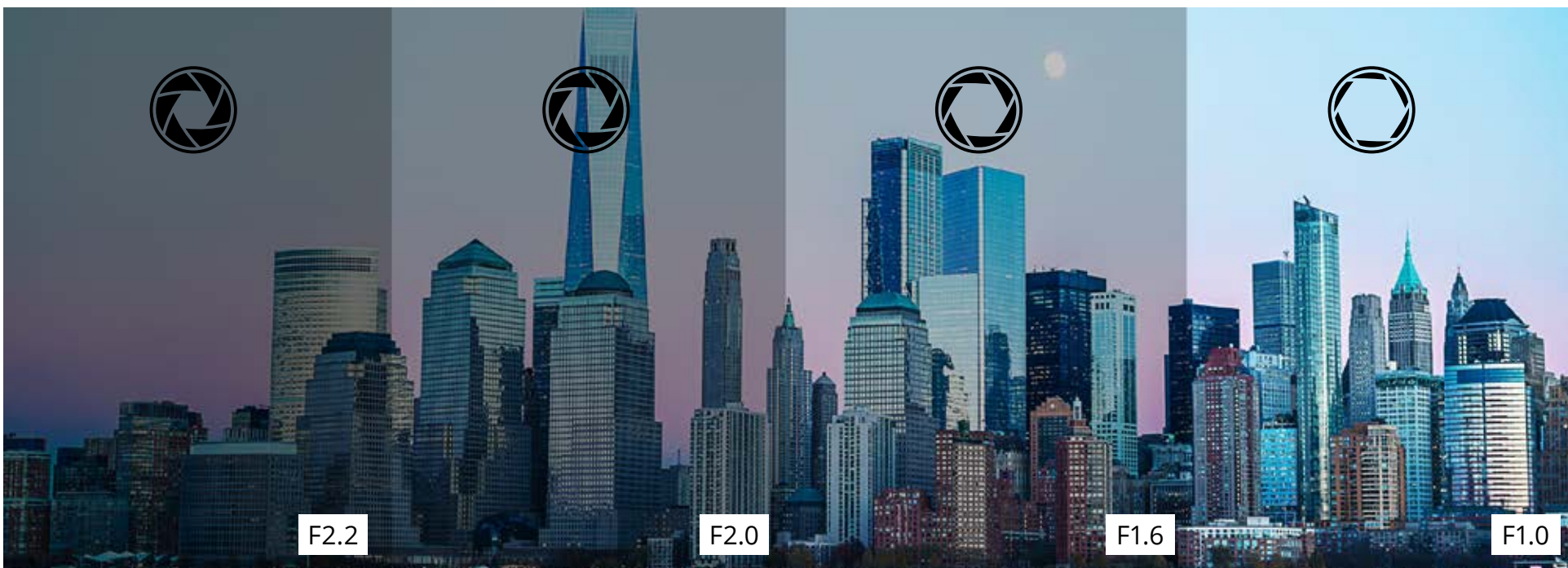
**180° PANORAMIC**





# WHY IS F-STOP SO IMPORTANT?

The lower the F-STOP the larger the aperture allowing more light through the lens producing a brighter more vivid image.



## 4MP IP COLORMAX ULTRA

COR-IP4TRFU

### FEATURES

- 2.8mm wide angle fixed lens
- F1.0 with 0.0005 Lux
- Active Deterrence Lights
- Advanced AI
- ColorMAX 24/7 color
- Built-in Microphone & Speaker (2 way)
- IP67 metal housing
- PoE or 12vDC
- Dimensions: 3.9 x 3.9 x 3.5 inches



## 4MP IP COLORMAX ULTRA

COR-IP4BFU

### FEATURES

- 2.8mm wide angle fixed lens
- F1.0 with 0.0005 Lux
- Active Deterrence Lights
- Advanced AI
- ColorMAX 24/7 color
- Built-in Microphone & Speaker (2 way)
- IP67 metal housing
- PoE or 12vDC
- Dimensions: 9.75 x 2.9 x 2.9 inches



## 4MP IP COLORMAX ULTRA

COR-IP4TRVU

### FEATURES

- 3-10mm motorized varifocal lens
- F1.0 with 0.0005 Lux
- Active Deterrence Lights
- Advanced AI
- ColorMAX 24/7 color
- Built-in Microphone & Speaker (2 way)
- IP67 metal housing
- PoE or 12vDC
- Dimensions: 5.3 x 5 x 5 inches



## 4MP IP COLORMAX ULTRA

COR-IP4BVU

### FEATURES

- 3-10mm motorized varifocal lens
- F1.0 with 0.0005 Lux
- Active Deterrence Lights
- Advanced AI
- ColorMAX 24/7 color
- Built-in Microphone & Speaker (2 way)
- IP67 metal housing
- PoE or 12vDC
- Dimensions: 9.75 x 2.9 x 2.9 inches



## 8MP IP COLORMAX ULTRA

COR-IP8TRFU

### FEATURES

- 2.8mm wide angle fixed lens
- F1.0 with 0.0005 Lux
- Active Deterrence Lights
- Advanced AI
- ColorMAX 24/7 color
- Built-in Microphone & Speaker (2 way)
- IP67 metal housing
- PoE or 12vDC
- Dimensions: 3.9 x 3.9 x 3.5 inches



## 8MP IP COLORMAX ULTRA

COR-IP8BFU

### FEATURES

- 2.8mm wide angle fixed lens
- F1.0 with 0.0005 Lux
- Active Deterrence Lights
- Advanced AI
- ColorMAX 24/7 color
- Built-in Microphone & Speaker (2 way)
- IP67 metal housing
- PoE or 12vDC
- Dimensions: 9.75 x 2.9 x 2.9 inches



## 8MP IP COLORMAX ULTRA

COR-IP8TRVU

### FEATURES

- 3-10mm motorized varifocal lens
- F1.0 with 0.0005 Lux
- Active Deterrence Lights
- Advanced AI
- ColorMAX 24/7 color
- Built-in Microphone & Speaker (2 way)
- IP67 metal housing
- PoE or 12vDC
- Dimensions: 5.3 x 5 x 5 inches



## 8MP IP COLORMAX ULTRA

COR-IP8BVU

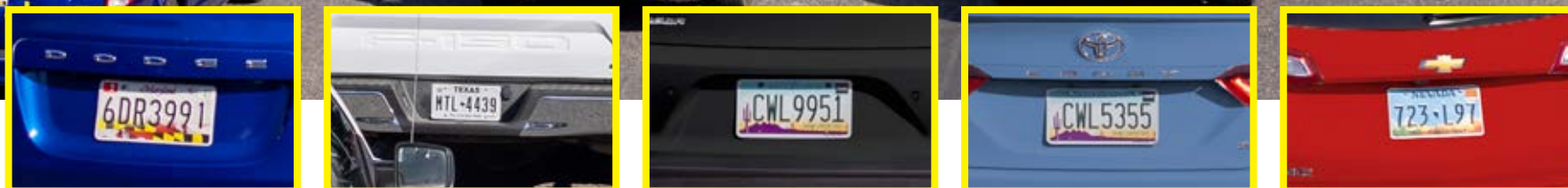
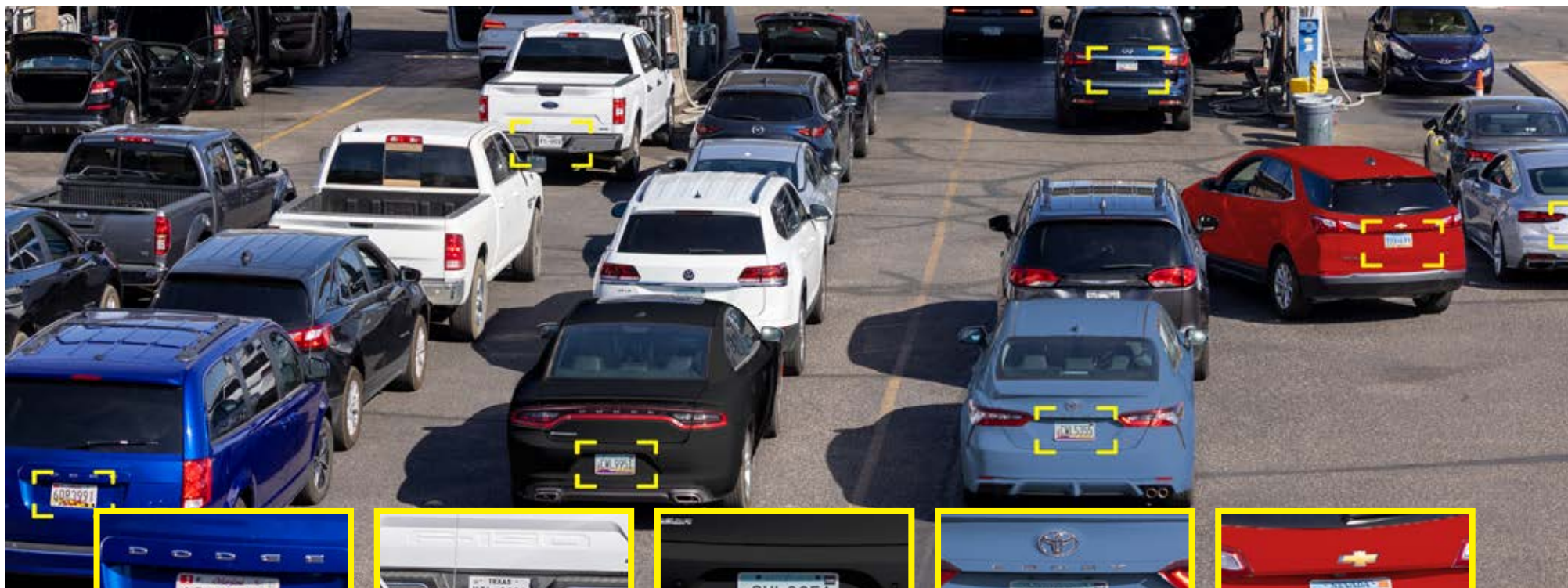
### FEATURES

- 3-10mm motorized varifocal lens
- F1.0 with 0.0005 Lux
- Active Deterrence Lights
- Advanced AI
- ColorMAX 24/7 color
- Built-in Microphone & Speaker (2 way)
- IP67 metal housing
- PoE or 12vDC
- Dimensions: 9.75 x 2.9 x 2.9 inches





# LONG DISTANCE OCR/ANPR



## READS AND CATALOGS THE DIGITS ON VEHICLE PLATES

### 5MP & 8MP IP LPR BULLET

COR-IP550LRA/COR-IP850LRA

**FEATURES**

- 5-50mm lens
- Motorized varifocal
- Advanced AI
- OCR/ANPR
- F1.6 0.003 Lux
- 250ft IR range
- On-board Storage
- Dimensions: 9.53 x 3.44 x 3.46 inches



## 5MP & 8MP

License plate recognition technology is a sophisticated tool that combines Optical Character Recognition (OCR) technology with AI to recognize car license plates fast and correctly.

**OCR/ANPR also available in many other models!**

# BI-SPECTRUM THERMAL CAMERAS

5MP DUAL MODULE IP VISIBLE LIGHT CAMERA WITH BUILT-IN THERMAL CAMERA



**THERMAL MODULE FEATURES**

- Vanadium Oxide Uncooled Focal Plane Arrays
- Resolution 256 (H) x 192 (V)
- 12µm Pixel interview
- 8-14µm response waveband
- ≤40mk @ 77°F F1.0, 25Hz NETD (Noise Equivalent Temperature Difference)
- 3.2mm Wide Angle Lens
- 3.75 mrad IFOV
- 56° (H) x 42° (V) Field of View
- Advanced AI - Region Entrance, Region Exiting, Line Crossing detection, Fire detection, Temperature exception alarm, Pedestrian & Vehicle

**OPTICAL MODULE FEATURES**

- Resolution 5MP 2592 (H) x 1944 (V)
- Color 0.03lux @ F1.6(AGC ON) B/W 0 lux @ IR ON
- 3.6mm Wide Angle Lens
- Dual Lighting - IR and ColorMAX
- 100ft IR Range - 50 ft ColorMAX
- Active Deterrence
- Horizontal: 81°, Vertical: 57°, Diagonal: 108° FOV
- Advanced AI - Region Entrance, Region Exiting, Line Crossing, Pedestrian & Vehicle, Object Detection, Crossing Counting, Crowd Density, Queue Length, Heat MAP, Rare Sound, Face Detection



Temperature exception alarm



Temperature range: -4° - 320° F



Supports audio and light alarms with built in red and blue flashing lights



Reliable fire detection and fire shield area

### DETECT AND VERIFY IN CHALLENGING AREAS

Thermal cameras capture images based solely on the heat radiating from organic and inorganic objects. Since thermal imaging technology doesn't depend on what is visible to the human eye, these cameras aren't sensitive to the challenging light conditions such as: total darkness, shadows and glaring light. This also means it is possible to see through smoke and fog.



### BETTER TARGET IDENTIFICATION

Heat-based images can be used together with analytics to enhanced detection helping reduce false alarms. Thermal palettes help identify different heat sources emitting the same amount of thermal energy making it easier and more efficient to distinguish objects in the frame.



### TEMPERATURE MONITORING

Thermal cameras are a great tool for remotely monitoring equipment temperatures. Without being on site thermal cameras can warn you if your equipment is getting close to overheating. A notification will be sent if the temperature surpasses a certain threshold.







**4X PTZ DOME**  
COR-IP4PTD

FEATURES

- 4X Optical Zoom (2.8-12mm lens)
- 60fps @ 4MP
- 360° Endless Pan
- Dual Lighting ColorMAX and IR
- 225 Presets
- Two-way Audio
- **Advanced AI with OCR/ANPR**
- Human Detection
- Audio and Light Deterrence

**360° 32MP MULTI-SENSOR CAMERA**

COR-IP32DVA



FEATURES

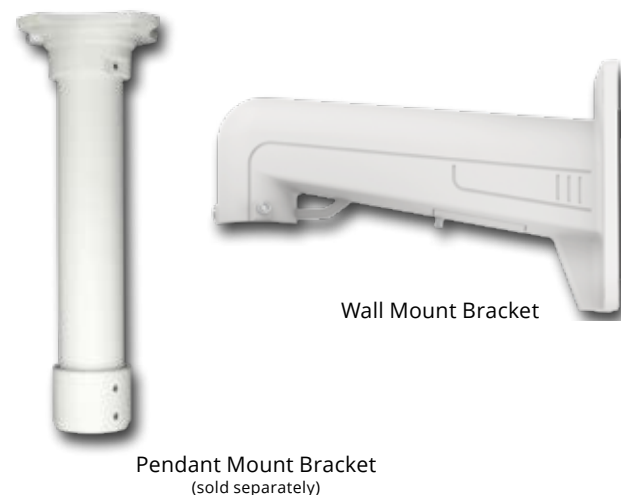
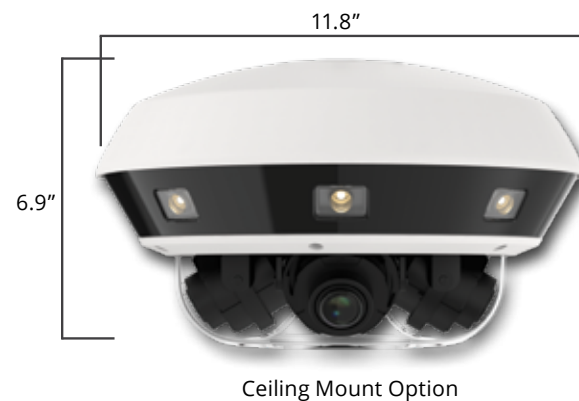
- 4 X 8MP Motorized Cameras - 32MP total
- **4 Independent varifocal lenses**
- 4 Channel stream output (not stitched)
- 8MP (3840 x 2160) at 30fps
- Dual lighting ColorMAX and IR
- Up to 32 users - 2 levels
- **Advanced AI including OCR/ANPR**
- Human detection
- Light deterrence
- Vandal resistant metal alloy



Best-In-Class Multi-sensor with ColorMAX® 24/7 Color



1 Cable - 4 Separate Channels





# INTELLIGENT PTZ CAMERAS



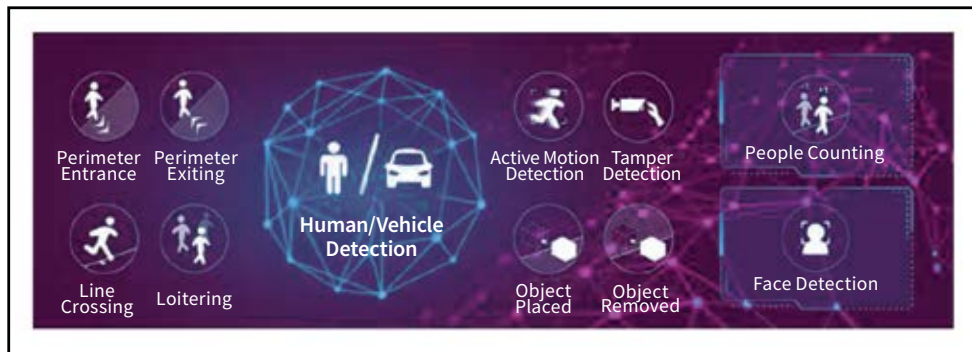
### Up to 25X Optical Zoom Capabilities

Embedded with an optical zoom lens, the camera resolution goes up to 25X which allows the cameras to zoom up to distant objects while still maintaining clarity and delivering high quality video over the entire zoom range.



### AI Video Analytics

- Advanced AI on all PTZ models including OCR/ANPR for license plate capture and databasing.
- People counting technology provides high accuracy and real-time data based on AI algorithm with statistical reports
- Create a threshold with line crossing or perimeter intrusion to trigger alarm functions



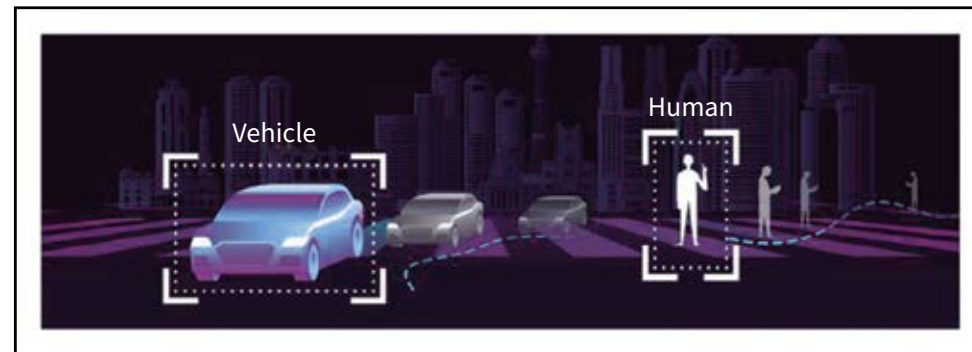
### 30fps Recording

Providing HD resolution at 30fps, this PTZ series performs exceptionally well catching detailed images regardless of movement speed.



### Human / Vehicle Detection

All Cortex AI PTZs have built-in Human and Vehicle Detection. Use in conjunction with other AI functions to further eliminate false alarms (example: line crossing with human detection. Only a human crossing the line in a certain direction will set off alarm or notification).



**2MP PTZ CAMERA**  
COR-IP2SPD25

### FEATURES

- 25X Optical Zoom (5-125mm lens)
- 30fps @ 2MP
- **Advanced AI including OCR/ANPR**
- 360° Endless Pan
- Up to 300ft IR
- 225 Presets
- 1 Alarm input / 1 Alarm output
- 1 Audio input / 1 Audio output
- Pan speed up to 200° per second
- IP67 Weatherproof
- DC12V / POE+ 25.6W



**5MP PTZ CAMERA**  
COR-IP5SPD25

### FEATURES

- 25X Optical Zoom (5-125mm lens)
- 30fps @ 5MP
- **Advanced AI including OCR/ANPR**
- 360° Endless Pan
- Up to 300ft IR
- 225 Presets
- 1 Alarm input / 1 Alarm output
- 1 Audio input / 1 Audio output
- Pan speed up to 200° per second
- IP67 Weatherproof
- DC12V / POE+ 25.6W



**8MP PTZ CAMERA**  
COR-IP8SPD25

### FEATURES

- 25X Optical Zoom (5-125mm lens)
- 30fps @ 8MP (4K)
- **Advanced AI including OCR/ANPR**
- 360° Endless Pan
- Up to 300ft IR
- 225 Presets
- 1 Alarm input / 1 Alarm output
- 1 Audio input / 1 Audio output
- Pan speed up to 200° per second
- IP67 Weatherproof
- DC12V / POE+ 25.6W





# Complete line of Hybrid DVRs and High Definition Cameras

- Fixed cameras with Audio over Coax
- ColorMAX 24/7 color models available
- 5MP & 4K Motorized Varifocal
- Powerful Hybrid DVR with Full IP
- Full AI functionality on DVRs\*



From 4 to 32 Channels



\*Certain models, see chart

# MEDALLION HYBRID SERIES

## COMPLETE COAXIAL LINE

# MEDALLION SERIES MOBILE APP

### SAME PLATFORM - SAME SOFTWARE

### Detailed AI based Notifications



CORTEX IQ

"I check in on my multiple business locations from anywhere, that is extremely important to me"  
-Michael B.



Live Viewing Playback Remote Settings

## CORTEX IQ



Download iOS



Download Android

# MEDALLION VMS PC/MAC SOFTWARE



- Full Software Suite
- Multi device management
- View multiple sites at the same time
- Back-up to PC



Live View and Playback



### 4 CH LITE HYBRID DVR

#### COR-MD4LT

##### FEATURES

- 4 Channels BNC + 2 Channels IP (via network)
- H.264/H.264+ H.265/H.265+ Compression
- Compact size
- 8-24 Mbps bandwidth
- 4K HDMI output
- 1 HDD bay up to 10TB
- 1 x USB 3.0 and 1 x USB 2.0
- Dimensions 11.6 x 8.93 x 2 inches
- UL Power supply
- NDAA Compliant



### 4 CH HYBRID DVR

#### COR-MD4

##### FEATURES

- 4 Channels BNC + 2 Channels IP\* (via network)
- H.264/H.264+ H.265/H.265+ Compression
- Compact size
- 16-48 Mbps bandwidth
- 4K HDMI output
- 1 HDD bay up to 16TB
- E-SATA expandable
- Supports Analytics
- 1 x USB 3.0 and 1 x USB 2.0
- Dimensions: 11.6 x 8.93 x 2 inches
- UL Power supply
- NDAA Compliant

\*can add more IP channels by disabling analog BNC channels



### 16 CH LITE HYBRID DVR

#### COR-MD16LT

##### FEATURES

- 16 Channels BNC + 8 Channels IP (via network)
- H.264/H.264+ H.265/H.265+ Compression
- Compact size
- 32-96 Mbps bandwidth
- 4K HDMI output
- 2 HDD bays up to 10TB each
- 1 x USB 3.0 and 1 x USB 2.0
- Dimensions: 14.88 x 12.48 x 2 inches
- UL Power supply
- NDAA Compliant



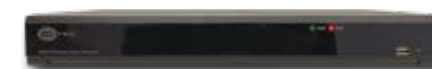
### 16 CH HYBRID DVR

#### COR-MD16

##### FEATURES

- 16 Channels BNC + 8 Channels IP\* (via network)
- H.264/H.264+ H.265/H.265+ Compression
- 64-192 Mbps bandwidth
- 4K HDMI output
- 2 HDD bays up to 16TB each
- E-SATA expandable
- Supports Analytics
- 1 x USB 3.0 and 1 x USB 2.0
- Dimensions: 14.88 x 12.48 x 2 inches
- UL Power supply
- NDAA Compliant

\*can add more IP channels by disabling analog BNC channels



### 8 CH LITE HYBRID DVR

#### COR-MD8LT

##### FEATURES

- 8 Channels BNC + 4 Channels IP (via network)
- H.264/H.264+ H.265/H.265+ Compression
- Compact size
- 16-48 Mbps bandwidth
- 4K HDMI output
- 1 HDD bay up to 10TB
- 1 x USB 3.0 and 1 x USB 2.0
- Dimensions 11.6 x 8.93 x 2 inches
- UL Power supply
- NDAA Compliant



### 8 CH HYBRID DVR

#### COR-MD8

##### FEATURES

- 8 Channels BNC + 4 Channels IP\* (via network)
- H.264/H.264+ H.265/H.265+ Compression
- Compact size
- 32-96 Mbps bandwidth
- 4K HDMI output
- 1 HDD bay up to 16TB
- E-SATA expandable
- Supports Analytics
- 1 x USB 3.0 and 1 x USB 2.0
- Dimensions: 11.6 x 8.93 x 2 inches
- UL Power supply
- NDAA Compliant

\*can add more IP channels by disabling analog BNC channels

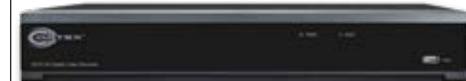


### 32 CH LITE HYBRID DVR

#### COR-MD32FHD

##### FEATURES

- 32 Channels BNC + 4 Channels IP (via network)
- H.264/H.264+ H.265/H.265+ Compression
- 32-128 Mbps bandwidth
- 4K HDMI output
- 4 HDD bays up to 16TB each
- E-SATA expandable
- 1 x USB 3.0 and 1 x USB 2.0
- Dimensions: 14.8 x 12.7 x 2.5 inches
- UL Power supply
- NDAA Compliant



### 4 BAY ESATA EXPANSION

#### COR-ESATA4

##### FEATURES

- Holds up to 4 hard drives
- Up to 8TB capacity each drive
- 3ft eSATA cable included

\*also works with Medallion series NVRs





	COR-MD4LT	COR-MD4	COR-MD8LT
			
			
 			
<b>Features</b>			
<b>Video Input</b>	4CH BNC + 2CH IP (via network)	4CH BNC + 2CH IP (via network)	8CH BNC + 4CH IP (via network)
<b>Video Output</b>	1 - HDMI up to 4K (3840 x 2160) 1 - VGA up to 1080P 1 - CVBS 704 x 576	1 - HDMI up to 4K (3840 x 2160) 1 - VGA up to 1080P 1 - CVBS 704 x 576	1 - HDMI up to 4K (3840 x 2160) 1 - VGA up to 1080P 1 - CVBS 704 x 576
<b>Bandwidth</b>	8-24Mbps	16-48Mbps	16-48Mbps
<b>Max Recording Resolution</b>	up to 4CH @ 3MP	up to 4CH @ 4K (8MP)	up to 8CH @ 3MP
<b>Decoding Format</b>	H.265 / H.265+ H.264 / H.264+	H.265 / H.265+ H.264 / H.264+	H.265 / H.265+ H.264 / H.264+
<b>Audio In / Out</b>	4CH Inputs / 1CH Output (RCA)	4CH Inputs / 1CH Output (RCA)	8CH Inputs / 1CH Output (RCA)
<b>Alarm In / Out</b>	4 Alarm Inputs / 1 Alarm Output	4 Alarm Inputs / 1 Alarm Output	8 Alarm Inputs / 1 Alarm Output
<b>IP Channels</b>	2-6	2-6	4-12
<b>Analytic Support</b>	No	Yes: PID / LCD / PD&VD / FD / FR	No
<b>Storage</b>	1 HDD Bay up to 10TB	1 HDD Bay up to 14TB 1- E-SATA expansion slot	1 HDD Bay up to 10TB
<b>Network</b>	1 RJ45 10/100 Base T	1 RJ45 10/100 Base T	1 RJ45 10/100 Base T
<b>USB Ports</b>	2 x 2.0 USB	2 x 2.0 USB	2 x 2.0 USB
<b>Dimensions</b>	300 x 208 x 48mm (11.6 x 8.19 x 1.89 inches)	300 x 208 x 48mm (11.6 x 8.19 x 1.89 inches)	300 x 208 x 48mm (11.6 x 8.19 x 1.89 inches)

	COR-MD8	COR-MD16LT	COR-MD16	COR-MD32FHD
				
				
<b>Features</b>				
<b>Video Input</b>	8CH BNC + 4CH IP (via network)	16CH BNC + 8 IP (via network)	16CH BNC + 8 IP (via network)	32CH BNC + 4 IP (via network)
<b>Video Output</b>	1 - HDMI up to 4K (3840 x 2160) 1 - VGA up to 1080P 1 - CVBS 704 x 576	1 - HDMI up to 4K (3840 x 2160) 1 - VGA up to 1080P	1 - HDMI up to 4K (3840 x 2160) 1 - VGA up to 1080P 1 - CVBS 704 x 576	1 - HDMI up to 4K (3840 x 2160) 1 - VGA up to 1080P 1 - CVBS 704 x 576
<b>Bandwidth</b>	32-96Mbps	32-96Mbps	64-192Mbps	32-128Mbps
<b>Max Recording Resolution</b>	up to 8CH @ 4K (8MP)	up to 16CH @ 3MP	up to 16CH @ 4K (8MP)	up to 32CH @ 3MP
<b>Decoding Format</b>	H.265 / H.265+ H.264 / H.264+	H.265 / H.265+ H.264 / H.264+	H.265 / H.265+ H.264 / H.264+	H.265 / H.265+ H.264 / H.264+
<b>Audio In / Out</b>	8CH Inputs / 1CH Output (RCA)	16CH Inputs / 1CH Output (RCA)	16CH Inputs / 1CH Output (RCA)	8CH Inputs / 1CH Output (RCA)
<b>Alarm In / Out</b>	8 Alarm Inputs / 1 Alarm Output	16 Alarm Inputs / 1 Alarm Output	16 Alarm Inputs / 1 Alarm Output	16 Alarm Inputs / 1 Alarm Output
<b>IP Channels</b>	4-12	8-24	8-24	4
<b>Analytic Support</b>	Yes: PID / LCD / PD&VD / FD / FR	No	Yes: PID / LCD / PD&VD / FD / FR	No
<b>Storage</b>	1 HDD Bay up to 14TB each 1- E-SATA expansion slot	2 HDD Bays up to 10TB each	2 HDD Bays up to 14TB each 1- E-SATA expansion slot	4 HDD Bays up to 10TB each 1- E-SATA expansion slot
<b>Network</b>	1 RJ45 100/1000 Base T	1 RJ45 100/1000 Base T	1 RJ45 100/1000 Base T	2 RJ45 100/1000 Base T
<b>USB Ports</b>	1 x 3.0 USB for backup / upgrade 1 x 2.0 USB	1 x 3.0 USB for backup / upgrade 1 x 2.0 USB	1 x 3.0 USB for backup / upgrade 1 x 2.0 USB	1 x 3.0 USB for backup / upgrade 1 x 2.0 USB
<b>Dimensions</b>	300 x 208 x 48mm (11.6 x 8.19 x 1.89 inches)	378 x 317 x 50mm (14.88 x 12.48 x 1.97 inches)	378 x 317 x 50mm (14.88 x 12.48 x 1.97 inches)	379 x 326 x 66mm (14.8 x 12.7 x 2.5 inches)

**2MP FIXED TURRET**  
COR-H2TRF COR-H2TRFG

- FEATURES
- 3.6mm fixed lens
  - Small size
  - 80ft IR range
  - IP66 metal housing
  - 12vDC
  - Dimensions: 3.9 x 3.9 x 3.5 inches



**2MP FIXED BULLET**  
COR-H2BF

- FEATURES
- 3.6mm fixed lens
  - Small size
  - 60ft IR range
  - IP66 metal housing
  - 12vDC
  - Dimensions: 6.2 x 3.5 x 3.5 inches



**5MP FIXED TURRET**  
COR-H5TRF / COR-HTRFG

- FEATURES
- 2.8mm wide angle fixed lens
  - Audio over coax
  - Small Size
  - Dual lighting ColorMAX 24/7 color
  - IP66 metal housing
  - 12vDC
  - Dimensions: 3.9 x 3.9 x 3.5 inches



**5MP FIXED BULLET**  
COR-H5BF

- FEATURES
- 2.8mm wide angle fixed lens
  - Audio over coax
  - Small Size
  - Dual lighting ColorMAX 24/7 color
  - IP66 metal housing
  - 12vDC
  - Dimensions: 3.9 x 3.9 x 3.5 inches



**2MP VARIFOCAL TURRET**  
COR-H2TRV

- FEATURES
- 2.8-12mm lens
  - Manual Varifocal lens
  - 150ft IR range
  - IP66 metal housing
  - 12vDC
  - Dimensions: 5.3 x 5.3 x 4.7 inches



**2MP VARIFOCAL TURRET**  
COR-H2TRVG

- FEATURES
- 2.8-12mm lens
  - Manual Varifocal lens
  - 150ft IR range
  - IP66 metal housing
  - 12vDC
  - Dimensions: 5.3 x 5.3 x 4.7 inches



**5MP MOTORIZED TURRET**  
COR-H5TRV

- FEATURES
- 2.8-12mm lens
  - Motorized Varifocal lens
  - 150ft IR range
  - IP66 metal housing
  - 12vDC
  - Dimensions: 5.3 x 5.3 x 4.7 inches



**5MP MOTORIZED BULLET**  
COR-H5BV

- FEATURES
- 2.8-12mm lens
  - Motorized Varifocal lens
  - 150ft IR range
  - IP66 metal housing
  - 12vDC
  - Dimensions: 9.48 x 3.3 x 3.3 inches



**2MP VARIFOCAL BULLET**  
COR-H2BV

- FEATURES
- 2.8-12mm lens
  - Manual Varifocal lens
  - 150ft IR range
  - IP66 metal housing
  - 12vDC
  - Dimensions: 9.48 x 3.3 x 3.3 inches



**2MP VARIFOCAL BULLET**  
COR-H2BVG

- FEATURES
- 2.8-12mm lens
  - Manual Varifocal lens
  - 150ft IR range
  - IP66 metal housing
  - 12vDC
  - Dimensions: 9.48 x 3.3 x 3.3 inches



**8MP FIXED TURRET**  
COR-H8TRF

- FEATURES
- 2.8mm wide angle fixed lens
  - Audio over coax
  - Small Size
  - Dual lighting ColorMAX 24/7 color
  - IP66 metal housing
  - PoE or 12vDC
  - Dimensions: 3.9 x 3.9 x 3.5 inches



**8MP MOTORIZED TURRET**  
COR-H8TRV

- FEATURES
- 2.8-12mm lens
  - Motorized Varifocal lens
  - 150ft IR range
  - IP66 metal housing
  - 12vDC
  - Dimensions: 5.3 x 5.3 x 4.7 inches







# CORTEX ACCESSORIES & MORE

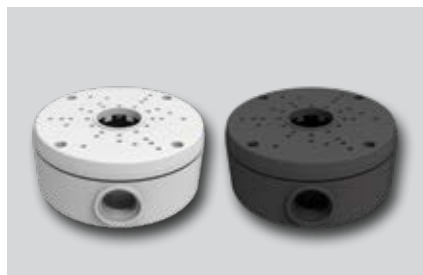
COMPLETE ACCESSORY LINE





**COR-IPBBM / COR-IPBBMG**

- Mini Back Box
- Fits small turrets and bullets
- White & Black models available



**COR-IPBBS / COR-IPBBSG**

- Small Back Box
- Fits medium turrets and large bullets
- White & Black models available



**COR-IPBBL**

- Large Back Box
- Fits large turrets



**COR-IPBBDV**

- Varifocal Dome Back Box
- Fits fixed lens dome camera



**COR-IPBBDVW**

- Varifocal Dome Wall Bracket
- Fits Varifocal lens dome cameras



**COR-IPBBDF**

- Fixed Dome Back Box
- Fits fixed lens dome camera



**COR-IPBBMT**

- Mini Threaded Back Box
- Fits small turrets and bullets
- For use with IPBBLW and IPBBLP



**COR-IPBBLT**

- Large Threaded Back Box
- Fits medium & large turrets and bullets
- For use with IPBBLW and IPBBLP



**COR-IPBBLW**

- Wall mount adapter
- For use with any threaded back box



**COR-IPBBDFT**

- Fixed Dome Threaded Back Box
- Fits fixed lens dome cameras
- For use with IPBBLW and IPBBLP



**COR-IPBBDFT**

- 1 Piece Wall Bracket
- Fits turret cameras



COR-IP8TRVA with IPBBLT + IPBBLW



**COR-IPBBLP**

- Pendant mount adapter
- For use with any threaded back box



**COR-IPBBF**

- 360° Fisheye Back Box
- Fits 360° Fisheye camera



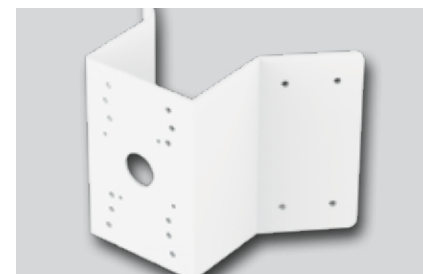
**COR-IPBBFT**

- 360° Fisheye Threaded Back Box
- Fits 360° Fisheye camera
- For use with IPBBLW and IPBBLP



**COR-PMA**

- Pole Mount Adapter
- Use to mount cameras to a pole



**COR-CMB**

- Corner Mount Bracket
- Use for PTZ cameras when mounting on corner of building



COR-IP8FISH with IPBBFT + IPBBLW



**4 PORT POE SWITCH**

**COR-POE4**

**FEATURES**

- 4 port PoE with 2 uplink ports
- Small size
- 10/100 Mbps port & uplink
- 65 Watts
- Dimensions: 7.8 x 4.6 x 1.7 inches



**4 & 8 PORT HARDENED POE SWITCH**

**COR-POE4H / POE8H**

**FEATURES**

- 4 port Gigabit PoE with 1 uplink port
- Small size
- Rated for high temperatures
- 10/100/1000 Mbps ports & uplink
- 65 Watts
- 4 Port Dimensions: 5.3 x 5.3 x 1 inches
- 8 Port Dimensions: 7.8 x 4.6 x 1.7 inches



**REGULATED 12V POWER ADAPTORS**

**COR-121R (1 AMP)**

**FEATURES**

- 1000mA (1 amp)
- 2000mA (2 amp)
- 5000mA (5 amp)
- 8000ma (8 amp)

5 amp and 8 amp use with Plug1s4 and Plug1s8 adaptors



**4CH 12V 5 AMP POWER BRICK**

**COR-125R4CH**

**FEATURES**

- 4 Channels with screw terminals
- Input:AC120V ~ AC 240V
- Output: DC 12V, 5A
- Surge protection
- Automatic voltage regulation
- Dimensions: 5.9 x 2.36 x 1.2 inches



**8 PORT POE SWITCH**

**COR-POE8**

**FEATURES**

- 8 port PoE with 2 uplink ports
- Small size
- 10/100 Mbps port & uplink
- 150 Watts
- Dimensions: 7.8 x 4.6 x 1.7 inches



**24 PORT POE SWITCH**

**COR-POE24**

**FEATURES**

- 24 port PoE with 2 Gigabit uplink ports
- 2 SFP slots
- 10/100 Mbps Ports
- 10/100/1000 Mbps Uplink
- 400 Watts
- Dimensions: 17.3 x 7.9 x 1.7 inches



**9CH 5 AMP POWER SUPPLY**

**COR-PS9DC5**

**FEATURES**

- 9 Channels with screw terminals
- Input:AC120V ~ AC 240V
- Output: DC 12V, 5A
- Class 2 PTC output protection per port
- Individual LED status indicators
- UL listed
- 9.45x 10.2 x 2.36 inches



**9CH 10 AMP POWER SUPPLY**

**COR-PS9C10**

**FEATURES**

- 9 Channels with screw terminals
- Input:AC120V ~ AC 240V
- Output: DC 12V, 105A
- Class 2 PTC output protection per port
- Individual LED status indicators
- UL listed
- 9.45x 10.2 x 2.36 inches



**16 PORT POE SWITCH**

**COR-POE16**

**FEATURES**

- 16 port PoE with 2 Gigabit uplink ports
- Small size
- 10/100 Mbps Ports
- 10/100/1000 Mbps Uplink
- 250 Watts
- Rack mount brackets included
- Dimensions: 9.48 x 3.3 x 3.3 inches



**POE INJECTORS**

**COR-POEINJ30 / COR-POEINJ60**

**FEATURES**

- Gigabit single port PoE injectors
- 48V
- 30W IEEE 802.3at
- 60W IEEE 802.3bt high power
- LED indicators
- Dimensions: 6.6 x 2.9 x 1.7 inches



**8MP FIXED TURRET**

**COR-PS18DC10**

**FEATURES**

- 18 Channels with screw terminals
- Input:AC120V ~ AC 240V
- Output: DC 12V, 10A
- Class 2 PTC output protection per port
- Individual LED status indicators
- UL listed
- 9.45x 10.2 x 2.36 inches



**8MP MOTORIZED TURRET**

**COR-PS18DC20**

**FEATURES**

- 18 Channels with screw terminals
- Input:AC120V ~ AC 240V
- Output: DC 12V, 20A
- Class 2 PTC output protection per port
- Individual LED status indicators
- UL listed
- 9.45x 10.2 x 2.36 inches



COR-1000



- BNC female to female connector
- BNC male to male connector (COR-1003)

COR-1004



- RCA female to female connector
- RCA male to male connector (COR-1014)

COR-1004



- BNC female to F male connector
- F-female to BNC male adapter (COR-1035)

COR-1010



- BNC female to RCA male adapter
- RCA female to BNC male adapter (COR-1030)

COR-1020



- BNC T-splitter Female/male/female
- Female/female/female (COR-1025)

COR-1020



- BNC female to BNC male 90° right angle adapter

COR-2045



- UTP jacket stripper
- Cat5e & Cat6 UTP cable

COR-RJ45EZTOOL



- RJ45 Pass Through Modular Crimp Tool
- Trims wires and crimps at same time
- Compact Design

COR-2070



- Crimps RJ11/45/6P4P/8P8C/RJ-12
- On board cable cutter
- Ratchet design

COR-1110



- RCA female to BNC male adapter

COR-2110



- F-female to BNC male adapter

COR-1194



- BNC male compression connector for RG-59 see through glass for easy installation

COR-1196



- BNC male compression connector for RG-6 see through glass for easy installation

COR-RJ45C



- CAT5e (UTP) connector 8P8C
- Standard industry fit

COR-RJ45C6



- CAT6 (UTP) connector 8P8C
- 2 Piece
- Standard industry fit

COR-2050



- RG-6 / 59 / 62 Pro Crimp Tool
- Adjustable tension
- Insulated handles

COR-2095



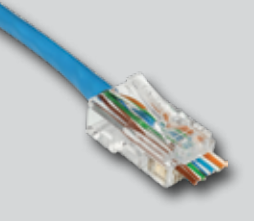
- OmniSeal Pro BNC Compression Tool
- Compresses F/BNC/RCA/RG-11F/Mini-Coax/90° connectors
- Adjustable post and knob for perfect fittings

COR-2095K



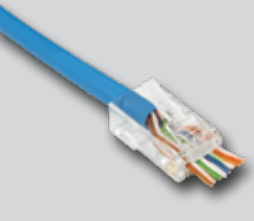
- OmniSeal Pro Compression Hip Kit
- Compression Tool / Cutter / Stripper combo
- Includes Hip Pouch with Belt Clip

COR-RJ45EZ



- CAT5e Pass Through connector
- 8P8C
- Standard industry fit

COR-RJ45EZ6



- CAT6 Pass Through connector
- 8P8C
- Standard industry fit

COR-CON22



- 2.1mm plug to terminal block
- Female 2.1mm plug to terminal block (COR-CON22F)

COR-PLUG21



- 2.1mm DC power plug 12 inch lead
- Female 2.1mm DC power plug 12 inch lead (COR-PLUG21F)

COR-CONRCA



- RCA male to terminal block

COR-PLUG1S4



- 2.1mm DC power splitter 1 in 4 out
- 2.1mm DC power splitter 1 in 8 out (COR-PLUG1S8)

COR-2020



- Beanie Crimper / Wire Stripper
- Multi-gauge for 10-22AWG solid or stranded wire

COR-2055



- Compact, lightweight cutting tool
- Flat cutting tip for cable tie cutting or braid trimming
- Stamped steel construction with spring loaded handles

COR-2059



- Coax 59/6/6Q/Plenum/UTP Cable Stripper
- Provides a 1/4" x 1/4" industry standard coax strip
- Compact size fits in pocket and saves tool bag space



**CAT5E CABLE****WIR-CAT5E**

## FEATURES

- 350MGHZ
- 4 pair 24 gauge solid bare copper
- Unshielded twisted pair
- ANSI/TIA 568.2-D
- Available in: Standard Riser, Plenum, UV rated, Direct Burial, Aerial and more. Ask for details
- 1000ft Box

**CAT6 CABLE****WIR-CAT6**

## FEATURES

- 550MGHZ
- 4 pair 24 gauge solid bare copper
- Unshielded twisted pair
- ANSI/TIA 568.2-D
- Available in: Standard Riser, Plenum, UV rated, Direct Burial, Aerial and more. Ask for details
- 1000ft Box

**RG6 QUAD SHIELD CABLE****WIR-RG6QS**

## FEATURES

- QuadShield coax
- 18 Gauge CCS
- 3.0 GHz
- 60%/40% AL braid
- 500ft box
- Sequential foot markings

**RG59 SIAMESE CABLE****WIR-RG59S**

## FEATURES

- RG59 Coaxial Cable
- 18/2 Stranded CCA for power
- Foil insulator
- 500ft box or 1000ft box
- Sequential foot markings

**22 GAUGE STRANDED WIRE****WIR-22/2**

## FEATURES

- 22 Gauge
- 2, 4, 6, 8 or 12 conductor
- 500ft speed bag or 1000ft box
- Unshielded stranded bare copper
- Sunlight resistant PVC jacket
- Ripcord
- Sequential foot markings

**18 GAUGE STRANDED WIRE****WIR-18/2**

## FEATURES

- 18 Gauge
- 2, 4, 6 or 8 conductor
- 500ft box or 1000ft box
- Unshielded stranded bare copper
- Sunlight resistant PVC jacket
- Ripcord
- Sequential foot markings

**CAT5E/CAT6 PATCH CABLES****COR-CAT5E-100**

## FEATURES

- From 1ft to 100ft lengths
- Cat5e or Cat6
- Snag-less
- Molded boot
- PVC jacket

**COAX PREMADE CABLES****COR-COAX75DC**

## FEATURES

- Transmit video and power
- 75ft length
- 1 DC Female, 1 DC Male for power
- BNC connections for video
- PVC jacket

**16 GAUGE STRANDED WIRE****WIR-16/2**

## FEATURES

- 16 Gauge
- 2 conductor or 4 conductor
- 500ft box or 1000ft box
- Unshielded stranded bare copper
- Sunlight resistant PVC jacket
- Ripcord
- Sequential foot markings

**14 GAUGE STRANDED WIRE****WIR-14/2**

## FEATURES

- 14 Gauge
- 2 conductor or 4 conductor
- 500ft box or 1000ft box
- Unshielded stranded bare copper
- Sunlight resistant PVC jacket
- Ripcord
- Sequential foot markings

**HDMI CABLES****COR-HDMI-100**

## FEATURES

- 4K HDMI cables
- 1ft - 100ft lengths
- Version 2.0B
- High-speed
- Gold plated plugs
- Audio Return Channel (ARC)
- PVC jacket

**VGA CABLES****COR-VGA**

## FEATURES

- VGA male to male
- 1080P full HD
- Screw-in 15 pin heads
- Coax style heavy duty jacket
- Plug-n-play



Most cables available in: Standard Riser, Plenum, Shielded, UV rated, Direct Burial and more. Ask for details

**CAT5E KEYSTONE JACKS**

101-BL

**FEATURES**

- 90° Cat5e Keystone insert
- Color coded wiring labels
- 10 colors available
- UL
- NEC® Article 800, TIA-568 and ISO/IEC 11801 Compliant



**CAT6 KEYSTONE JACKS**

CAT6-JACK-BL

**FEATURES**

- 90° Cat6 Keystone insert
- Color coded wiring labels
- 10 colors available
- UL
- NEC® Article 800, TIA-568 and ISO/IEC 11801 Compliant

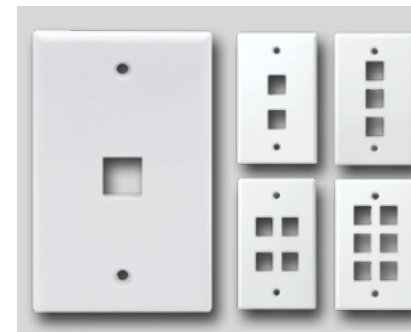


**KEYSTONE WALL PLATES**

201

**FEATURES**

- Standard Single Gang
- 1 to 6 ports
- ABS Plastic
- UL

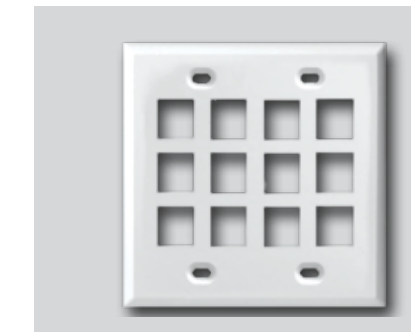


**2 GANG KEYSTONE PLATE**

2012

**FEATURES**

- Standard Double Gang
- 12 ports
- ABS Plastic
- UL

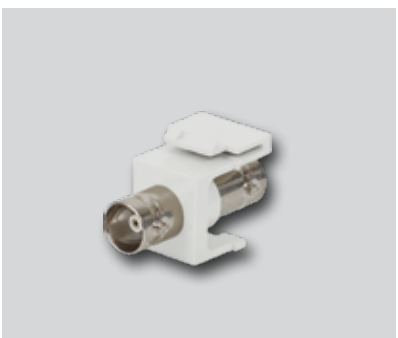


**BNC KEYSTONE INSERT**

208

**FEATURES**

- BNC Keystone snap in insert
- Female to Female
- Nickle plated
- UL



**HDMI KEYSTONE INSERT**

251

**FEATURES**

- 90° HDMI snap in insert
- Female to Female
- Gold plated
- Passive HDMI connections only



**BRUSH WALLPLATE**

252 / 253

**FEATURES**

- Decorator Style pass through
- Large width opening
- ABS plastic
- Painted screw heads
- Available with black or white brush
- UL



**LOW VOLTAGE MOUNTING BRACKET**

MBLV1

**FEATURES**

- Single gang
- Class 2
- Existing Construction
- Also available in:
  - 2 Gang
  - 3 Gang
  - 4 Gang

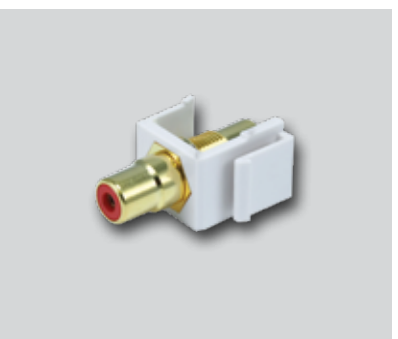


**RCA KEYSTONE INSERT**

243

**FEATURES**

- RCA keystone snap in insert
- Gold plated
- Female to Female
- UL



**COAX F KEYSTONE INSERT**

209

**FEATURES**

- 3Ghz F-Connector snap in insert
- Female to Female
- Gold plated
- UL



**CAT5E PATCH PANELS**

312 / 324 / 348

**FEATURES**

- 12, 24 and 48 Port Patch Panels
- Loaded
- Gold plated RJ45 port contacts
- Color coded rear 110 IDC punch down
- ANSI/TIA 568-2-D
- Scratch resistant powder coat finish
- ISO/IEC 11801 Class E/D
- PoE IEEE 802.3bt



**CAT6 PATCH PANELS**

312-6 / 324-6 / 348-6

**FEATURES**

- 12, 24 and 48 Port Patch Panels
- Loaded
- Gold plated RJ45 port contacts
- Color coded rear 110 IDC punch down
- ANSI/TIA 568-2-D
- Scratch resistant powder coat finish
- ISO/IEC 11801 Class E/D
- PoE IEEE 802.3bt





**6U WALL MOUNT CABINET**

**RK6UCAB**

**FEATURES**

- Wall mount server cabinet
- 180° Gate Swing
- Glass front door
- Lock set included
- Dimensions: 23.6" x 19" x 6U



**9U WALL MOUNT CABINET**

**RK9UCAB**

**FEATURES**

- Wall mount server cabinet
- Double section
- Glass front door
- Lock set included
- Dimensions: 23.6" x 23.6" x 9U

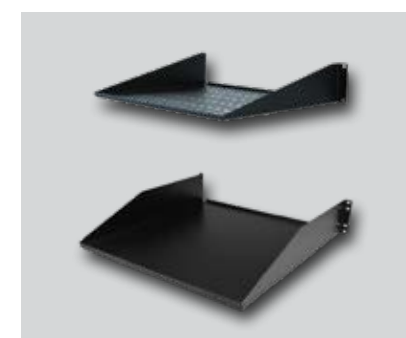


**CANTILEVER RACK SHELVES**

**RK19S**

**FEATURES**

- 19" Wide standard cantilever shelves
- 1U and 2U options
- Vented or non vented
- Black stainless steel
- 1U Dimensions: 19" x 12 x 1U
- 2U Dimensions: 19" 14.5 x 2U



**4FT AND 7FT OPEN RACKS**

**RK24U / RK45U**

**FEATURES**

- Standard 19" wide
- 2 Post open frame design
- Black aluminum
- 4ft or 24U tall
- 7ft or 45U tall
- Free standing



RK24U

RK45U

**12U WALL MOUNT CABINET**

**RK12UCAB**

**FEATURES**

- Wall mount server cabinet
- Double section
- Glass front door
- Lock set included
- Dimensions: 23.6" x 19" x 12U



**SMALL NVR LOCKBOX**

**COR-1818F**

**FEATURES**

- All metal enclosure
- Removable lid
- Locking front door
- Large fan
- Dimensions: 18" x 18" x 5"



**FINGER DUCT MANAGEMENT**

**208500**

**FEATURES**

- Multiple sizes
- 1U 2U
- Horizontal and vertical options
- Single or double sided



**LARGE NVR LOCKBOX**

**COR-1819F**

**FEATURES**

- All metal enclosure
- Removable lid
- Locking front door
- 2 Large fans
- Dimensions: 21" x 21" x 8"



**LOCKBOX MOUNTING BRACKETS**

**COR-1819HWB/VWB**

**FEATURES**

- Horizontal mounting brackets
- Vertical mounting brackets
- Works on lockboxes only



**1U POWER STRIP**

**RKPS10**

**FEATURES**

- 10 Outlet power strip
- 1U
- 15A Surge protection
- 1800 Joules
- Individual LED switches
- 6ft Power cord



**TWISTED PAIR BALUNS**

**COR-HTBS**

**FEATURES**

- Passive UTP video transceiver
- For use with Cat5/Cat6
- Compatible with AHD/TVI/CVI/960H
- Up to 8MP resolution
- Compact size
- Sold in pairs



**RJ45C BALUNS**

**COR-HTBPK**

**FEATURES**

- Passive RJ45 video transceiver
- DC Power plugs
- For use with Cat5/Cat6
- Compatible with AHD/TVI/CVI/960H
- Up to 8MP resolution
- Sold in pairs



**IP OVER COAX**

**COR-C2IP-DATA**

**FEATURES**

- Transmitter/Receiver pair
- Send data over coaxial cable
- BNC to RJ45
- 10Mbps
- 650ft Distance
- Internal surge protection
- Up to 4k
- Low latency



**IP POE OVER COAX**

**COR-C2IP-POE**

**FEATURES**

- Transmitter/Receiver pair
- Send data & power over coaxial cable
- BNC to RJ45
- 10Mbps
- 650ft Distance
- Internal surge protection
- Up to 4k
- Low latency



**AC TO DC CONVERTER**

**COR-A2D2**

**FEATURES**

- Voltage Input : AC 16v ~ 28v
- Voltage Output : DC 12v @ 2Amp
- Removable terminal block



**RCA AMPLIFIED MICROPHONE**

**COR-MIC**

**FEATURES**

- RCA connection
- Covers entire standard room
- Built-in pre-amplifier
- 5" extension
- 12v DC (not included)
- Compact size



**HDMI SPLITTERS**

**HDMIX2 / HDMIX4 / HDMIX8**

**FEATURES**

- 2, 4 or 8 way HDMI splitters
- HDMI 1.4b version
- Up to 3840 x 2160 at 30Hz
- Input & output up to 50ft
- Supports 8/10/12 bit deep color



**COAX TO HDMI CONVERTER**

**COR-HDMICHD**

**FEATURES**

- Up to 4K AHD/TVI/CVI to HDMI
- 1Ch loop out
- 75Ω impedance
- Up to 60fps on certain resolutions
- Dimensions: 4.3 x 3.7 x 1



**ALARM / DETERRENCE DEVICE**

**COR-IPAL**

**FEATURES**

- 1 Audio input
- 1 Audio output
- 1 Alarm input
- Flashing enforcer lights 30 Lumen
- 88db Intruder alarm
- 32ft range internal microphone
- IP66 Weatherproof
- Dimensions: 4.8 inch diameter



**IN-LINE POE EXTENDERS**

**COR-POEX1 / COR-POEX2**

**FEATURES**

- 1Ch PoE repeater/amplifier
- PoE+
- 300ft Distance
- IEEE 802.3at / 802.3af
- Interior & Exterior models available



**24" LED MONITOR**

**COR-LED24PRO**

**FEATURES**

- Ultra-thin
- 1920 x 180P resolution
- 3D Noise reduction
- 16.7M (8bit) color
- 6.5ms response time
- 75Hz refresh rate
- 1VGA input 1HDMI input

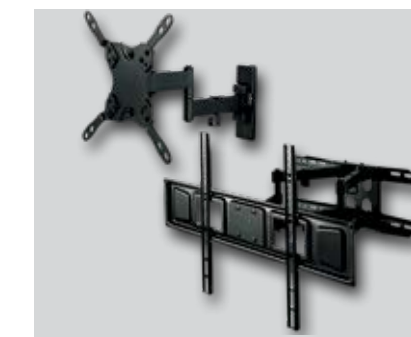


**TV MOUNTING BRACKETS**

**TVM1 / TVM2 / TVM3**

**FEATURES**

- VESA Monitor/TV mounts
- Multiple sizes
- Full motion or Tilt options
- From 19" to 80" TV's







## 16 DOOR NETWORK CONTROLLER

### COR-ACC1000

The ACC1000 is a compact wall-mounted IP-addressable door controller with a metal cabinet and a lockable door. It includes an on-board network interface and can support up to 16 proximity card readers via RS485. The ACC1000 can be linked to up to 254 other door controllers (other ACC1000 models) to provide support for large and expanding installations. A complete software suite for user-management, event notifications and tracking is included. The UPS port supports a rechargeable battery (not included) so the controller can be configured to continue working in the event of power failure.

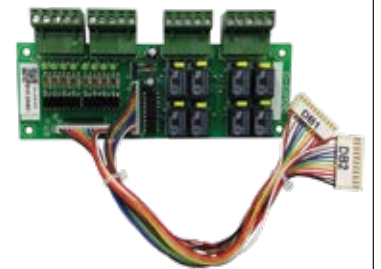
#### FEATURES

- Control up to 16 readers (RS485)
- Compact design
- On-board network interface
- Built-in UPS function w/rechargeable battery
- Supports 15,000 users
- Programmable card expiration supported
- 11,000 event memory
- Serial interface: RS485, 9600 baud, N, 8, 13
- 3 connections, 2 for readers, 1 for PC
- Anti-pass back supported
- Auto diagnostic: No user intervention necessary
- Dynamic door assignment supported
- Emergency door release supported
- 2 Wiegand readers supported
- Scheduled door release supported
- Scheduled door arming supported
- 63 Time Zones
- 255 door groups
- 120 programmable holidays
- Request to exit supported
- Relay inputs: 4 (expandable to 16), 3A
- Relay outputs: 4 (expandable to 16), 3A
- Voltage: 9-24VDC variable auto detection
- Dimensions: 7.09" x 9.09" x 2.44" (180mm x 231mm x 62mm)



#### EXPANSION BOARD

### COR-ACC1010

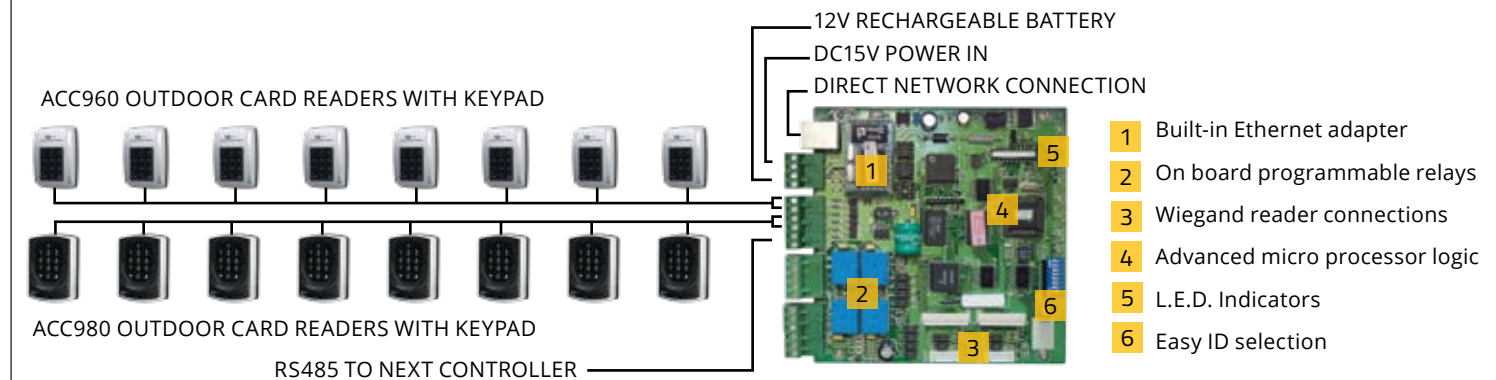


I/O Expansion 8 DI & 8 DO Board  
Ethernet Interface 10 Base-T



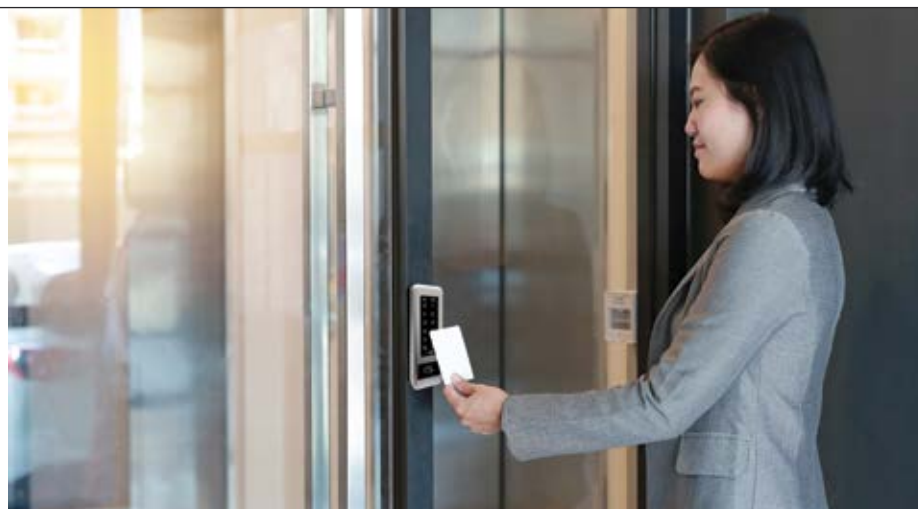
# CORTEX ACCESS CONTROL

## COMPLETE ACCESS LINE



# ACCESS CONTROL

- Proximity Readers
- Biometric Fingerprint Readers
- Electromagnetic Locking Devices
- Request to Exit
- On-board Programmable Relays
- Standalone or Networkable systems
- Indoor and Outdoor Rated Readers
- Web Browser Based Simple Interface
- Complete Software Suite
- Detailed Historical Logs



## CORTEX

### INDOOR CARD READER

COR-ACC910

- FEATURES
- Supports proximity cards
  - Up to 1,024 users
  - Bi-color LED & buzzer for feedback
  - RS232 interface
  - 9-16V DC
  - Dimensions: 3.19 x 1.69 x 0.41 inches



### OUTDOOR READER WITH KEYPAD

COR-ACC950

- FEATURES
- Advanced card reader with keypad for PIN input
  - Up to 1,024 users
  - On-board WG port for anti-pass back
  - RS485 interface
  - 10-24V DC
  - Dimensions: 5 x 3.6 x 2.6 inches



### OUTDOOR READER WITH KEYPAD

COR-ACC960

- FEATURES
- Touch sensitive keypad & proximity card reader
  - Up to 3,000 users
  - LED and buzzer for immediate feedback
  - RS485 interface
  - 10-24V DC
  - Dimensions: 4.49 x 3.08 x 1.1 inches



### OUTDOOR READER WITH KEYPAD

COR-ACC970

- FEATURES
- Touch sensitive keypad & proximity card reader
  - Up to 3,000 users
  - LED and buzzer for immediate feedback
  - RS485 interface
  - 10-24V DC
  - Dimensions: 5.51 x 3.62 x 1.3 inches



### OUTDOOR READER WITH KEYPAD

COR-ACC980

- FEATURES
- Touch sensitive keypad & proximity card reader
  - Up to 3,000 users
  - Backlit keypad
  - RS485 interface
  - 9-16V DC
  - Dimensions: 5 x 3.25 x 1.5 inches



### OUTDOOR IP READER WITH KEYPAD

COR-ACC980IP

- FEATURES
- Touch sensitive keypad & proximity card reader
  - Up to 3,000 users
  - Backlit keypad
  - IP Interface
  - 9-16V DC
  - Dimensions: 5 x 3.25 x 1.5 inches



### OUTDOOR IP READER WITH KEYPAD

COR-ACC890KP

- FEATURES
- Slimline IP card reader with keypad
  - Up to 3,000 users
  - Compact design- only 2 inches wide
  - IP interface
  - 9-16V DC
  - Dimensions: 6.22 x 2.16 x 1.18 inches



### OUTDOOR BIOMETRIC READER WITH KEYPAD

COR-ACC890BIO

- FEATURES
- Slimline IP biometric fingerprint card reader with keypad
  - Up to 3,000 users
  - Compact design- only 2 inches wide
  - IP interface
  - 9-16V DC
  - Dimensions: 6.22 x 2.16 x 1.18 inches





**FAIL SECURE DOOR STRIKE**

**COR-ACC120**

FEATURES

- Fail secure
- 12V DC power
- 400mA consumption
- Dimensions: 5.04 x 1.26 x 1.50



**FAIL SAFE DOOR STRIKE**

**COR-ACC130**

FEATURES

- Fail safe
- 12V DC power
- 400mA consumption
- Dimensions: 5.04 x 1.26 x 1.50



**LARGE PUSH TO EXIT BUTTON**

**COR-ACC400IL**

FEATURES

- Illuminated push to exit button
- High visibility
- N.O. and N.C. selectable
- Stainless steel face plate
- Single gang size
- 12V DC
- Dimensions: 4.5 x 2.75 x 0.16 inches



**SMALL PUSH TO EXIT BUTTON**

**COR-ACC410IL**

FEATURES

- Illuminated push to exit button
- High visibility
- N.O. and N.C. selectable
- Stainless steel face plate
- Back box included
- 12V DC
- Dimensions: 4.54 x 1.72 x 1.5 inches

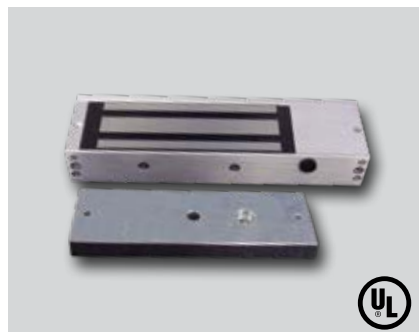


**600LB MAGLOCK**

**COR-ACC300**

FEATURES

- Surface Mount
- 600lbs holding force
- Heavy duty aluminum alloy
- Built-in voltage spike suppressor
- 12V DC / 24V
- 500mA/12V DC - 250mA/24V DC
- Dimensions: 9.825 x 1.875x 1 inches

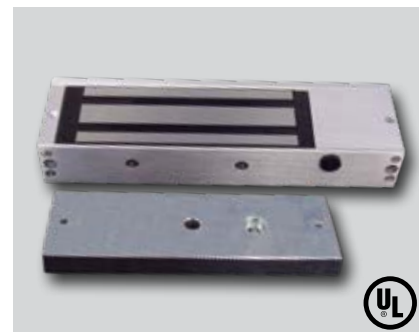


**1200LB MAGLOCK**

**COR-ACC500**

FEATURES

- Surface Mount
- 1200lbs holding force
- Heavy duty aluminum alloy
- Built-in voltage spike suppressor
- 12V DC / 24V
- 500mA/12V DC - 250mA/24V DC
- Dimensions: 10.5 x 2.875x 1.6 inches



**TOUCH TO EXIT DEVICE**

**COR-ACC460IL**

FEATURES

- Soft touch
- Multi-color illumination indicators
- Acrylic ABS plastic
- Slim size
- N.O. contact
- 350mA 12V DC
- 5-24V DC
- Dimensions: 4.5 x 1.75 x 0.25 inches



**TOUCH TO EXIT DEVICE**

**COR-ACC470IL**

FEATURES

- Soft touch
- Multi-color illumination indicators
- Acrylic ABS plastic
- Single gang size
- N.O. contact
- 350mA 12V DC
- 5-24V DC
- Dimensions: 4.5 x 2.75 x 0.25 inches



**DUAL 600LB MAGLOCK**

**COR-ACC300/2**

FEATURES

- Surface Mount
- 600lbs holding force per side
- Heavy duty aluminum alloy
- Built-in voltage spike suppressor
- 12V DC / 24V
- 500mA/12V DC - 250mA/24V DC
- Dimensions: 19.6 x 1.875x 1 inches



**DUAL 1200LB MAGLOCK**

**COR-ACC500/2**

FEATURES

- Surface Mount
- 1200lbs holding force per side
- Heavy duty aluminum alloy
- Built-in voltage spike suppressor
- 12V DC / 24V
- 500mA/12V DC - 250mA/24V DC
- Dimensions: 20.94 x 2.875x 1.6 inches



**DUAL TOUCHLESS AND PUSH TO EXIT**

**COR-ACC430**

FEATURES

- Illuminated touch-less infrared sensor
- Soft touch button for redundancy
- Stainless steel faceplate
- Single gang size
- 75mA 12V DC
- 9-24V DC
- Dimensions: 4.5 x 2.75 x 0.20 inches

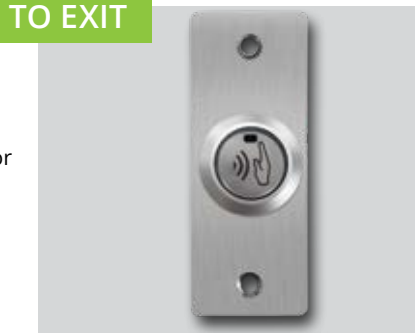


**DUAL TOUCHLESS AND PUSH TO EXIT**

**COR-ACC431**

FEATURES

- Illuminated touch-less infrared sensor
- Soft touch button for redundancy
- Stainless steel faceplate
- Slim size
- 75mA 12V DC
- 9-24V DC
- Dimensions: 4.5 x 1.75 x 0.20 inches

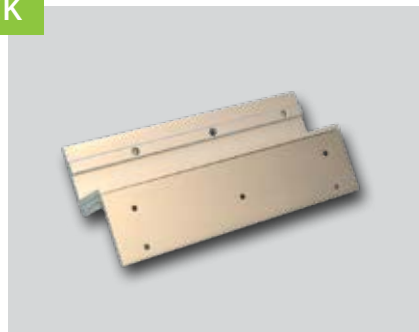


**Z BRACKET FOR 300LB MAGLOCK**

**COR-ACC6Z**

**FEATURES**

- Z shaped bracket for ACC300
- Composed of L brackets
- Aluminum alloy with anodized finish
- Dimensions: 9.82 x 3.89 x 1.18 inches

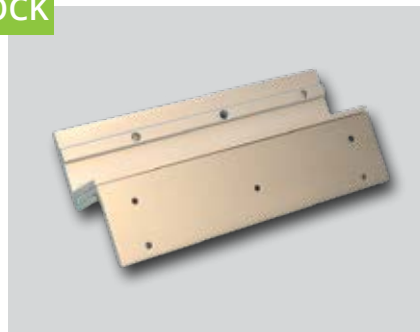


**Z BRACKET FOR 1200LB MAGLOCK**

**COR-ACC12Z**

**FEATURES**

- Z shaped bracket for ACC300
- Composed of L brackets
- Aluminum alloy with anodized finish
- Dimensions: 10.5 x 5.49 x 1.18 inches



**RS485 TO USB CONVERTER**

**COR-CN560**

**FEATURES**

- Link readers to PC
- Granting network access
- LED indicators for power, communication, debugging and status
- Bare wire terminal block
- Isolated converter



**RELAY MODULE**

**COR-ACC899**

**FEATURES**

- Delay from 1 sec to 60 min
- 12/24v DC operation
- Form C contacts rate 5A
- Accepts positive or negative feedback
- Wet contacts for reduced wiring
- Oscillating flasher option

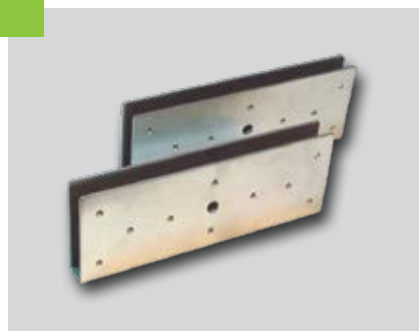


**U BRACKET FOR GLASS DOORS**

**COR-ACC612U**

**FEATURES**

- Machined from 1 piece solid aluminum
- Best for glass doors .35 to .5" thick
- Sandwich mount
- Rubber bushings included
- Anodized finish
- Dimensions: 7.2 x 2.4 x 1.3 inches



**SPACER FOR SINGLE MAGLOCKS**

**COR-ACC300S**

**FEATURES**

- Spacer bar for 600lb
- Solid aluminum
- Dimensions: 9.875 x 1 x 0.375 inches
- Use 2 bars for double maglock



**TIMER RELAY MODULE**

**COR-TM60**

**FEATURES**

- Delay from 1 sec to 60 min
- 12/24v DC operation
- Form C contacts rate 5A
- Accepts positive or negative feedback
- Wet contacts for reduced wiring
- Oscillating flasher option



**STANDARD PROXIMITY CARD**

**COR-ACC220A**

**FEATURES**

- Range: 10cm-15cm (3.94"-5.91")
- ISO standard spec
- 1.8mm thick
- Unique pre-assigned code per card
- 25 pieces per pack



**SPACER FOR DOUBLE MAGLOCKS**

**COR-ACC500S**

**FEATURES**

- Spacer bar for 1200lb
- Solid aluminum
- Dimensions: 10.5 x 1.625 x 0.25 inches
- Use 2 bars for double maglock



**RS232 TO RS485 CONVERTER**

**COR-CN550**

**FEATURES**

- DB9 connector on RS232 side
- Screw terminal connector on RS485 side
- Asynchronous half-duplex with no jumpers or settings
- Convert serial RS232 to compatible signals



**THIN PROXIMITY CARD**

**COR-ACC225**

**FEATURES**

- Range: 10cm-15cm (3.94"-5.91")
- ISO standard spec
- 0.75 mm thick
- Print directly card
- Unique pre-assigned code per card
- 50 pieces per pack



**PROXIMITY KEY FOB**

**COR-ACC230**

**FEATURES**

- 1Range: 5cm-10cm (1.97"-3.94")
- Waterproof
- Shock proof
- Hard to lose
- Unique pre-assigned code per card
- Key chain latch included







Darkness Meets Vibrance



**CORTEX**<sup>®</sup>  
GLOBAL SECURITY AND SURVEILLANCE

Authorized Dealers Only



HIGH QUALITY PRODUCTS  
FOR PROFESSIONALS